



# Breeze



Crochet Scarf Pattern

©CuteCrochetMakes 2023



**YARN** - 1 x Sultan Deluxe Whirl White Water Turquoise – colour 09. 100% cotton. 250g = 1000 metres

**CROCHET HOOK** - 3.5 mm

**GAUGE** - 20sts x 15 rows = 10 cm x 10 cm in rows of HDC

**SIZE** - ONE SIZE

**MEASUREMENTS** - Width: 23cm. Length: 244cm

## ABBREVIATIONS

CH = chain

SC = Single Crochet

HDC = Half Double Crochet

**B** = Bobble Stitch

SLST = Slip Stitch

[ ] = pattern repeat



## INFO AND TIPS

**Bobble Stitch** – 5 Double Crochet together in the same stitch.

**B** = \* Yarn over (YO), insert hook into stitch and pull through. (3 loops on hook). YO and pull through 2 loops. (1 loop on hook). Repeat from \* 4 more times in the same stitch. You will end up with 6 loops on your hook. YO and pull through all 6 loops. Bobble stitches will always be made on the **WRONG** side of work.



Wrong side of work

Right side of work

©CuteCrochetMakes 2023



Chart 1

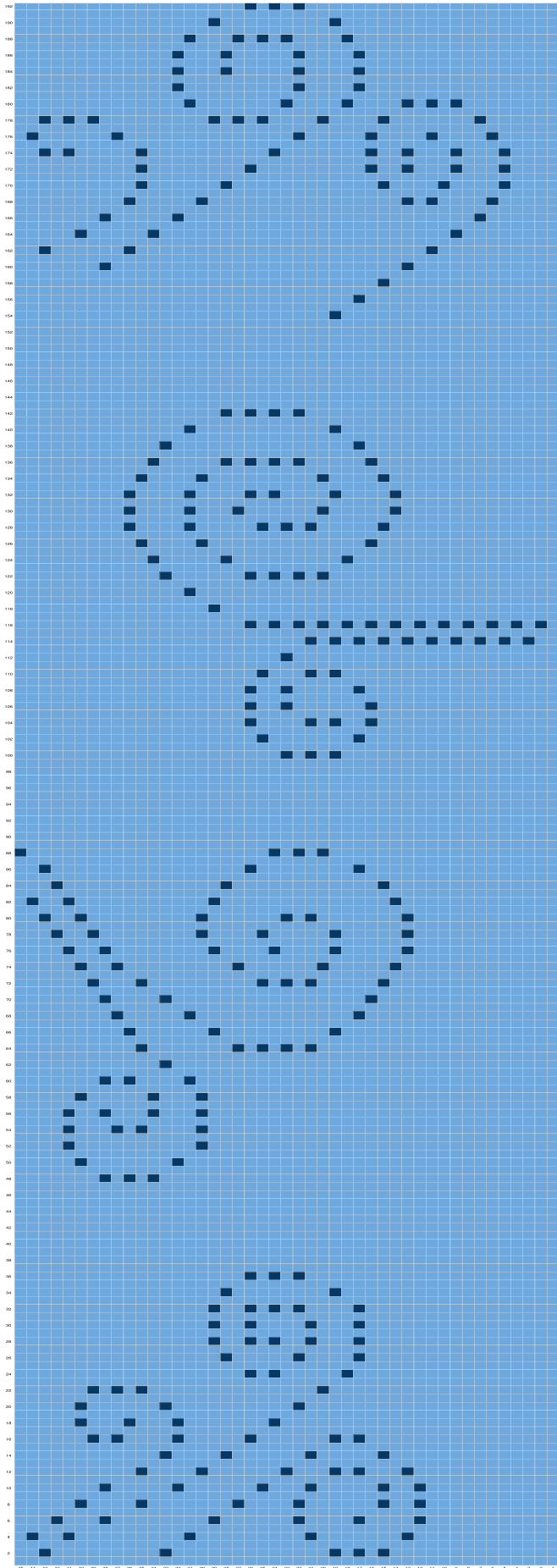
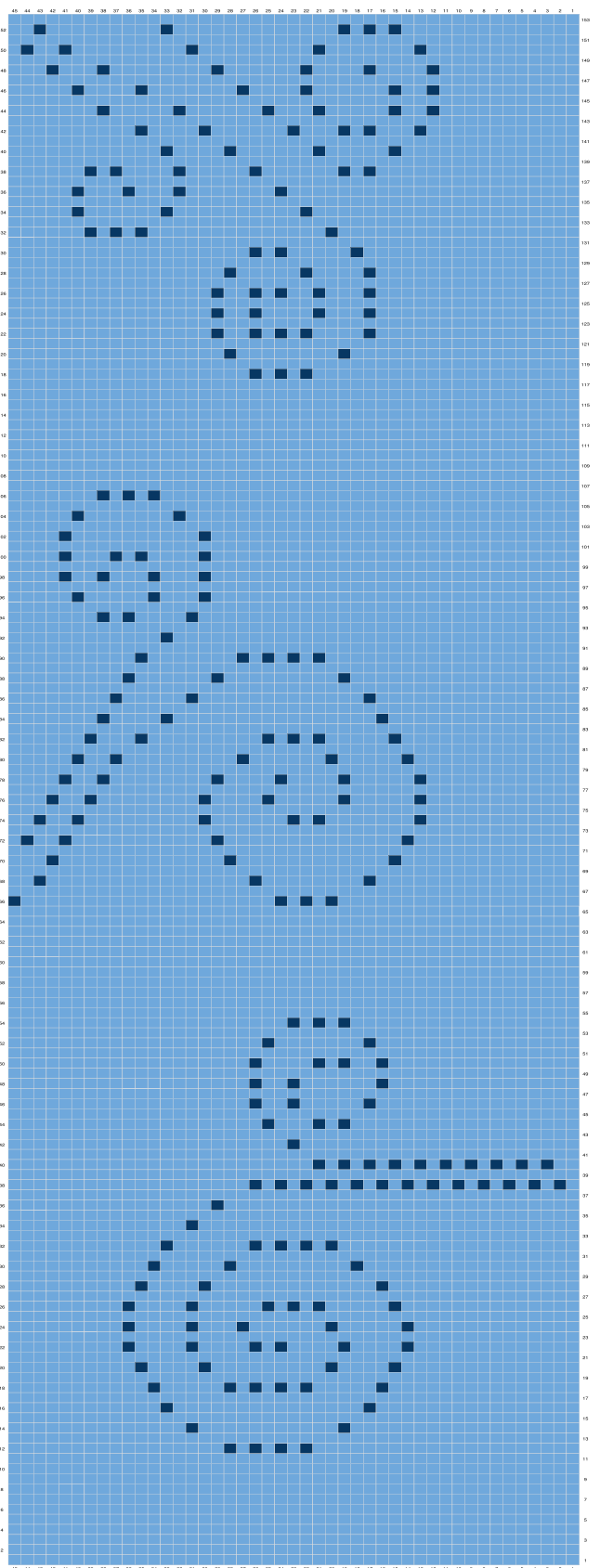


Chart 2



Start here

©CuteCrochetMakes 2023



## PATTERN

CH1 and turn at the end of each row. CH1 **does not** count as a ST throughout pattern.  
Starting from the **centre** of the whirl.

**CH46.** *Starting in the 2<sup>nd</sup> CH from the hook follow Row 1 below.*

- ← **Row 1 [RS]:** HDC in each ST across *(45 stitches here and throughout pattern).*
- **Row 2 [WS]:** 2HDC, **B**, 9HDC, **B**, 13HDC, **B**, [1HDC, **B**] **twice**. 14HDC
- ← **Row 3 [RS]:** HDC in each ST across
- **Row 4 [WS]:** 1HDC, **B**, 2HDC, **B**, [9HDC, **B**] **twice**. 7HDC, **B**, 12HDC
- ← **Row 5 [RS]:** HDC in each ST across
- **Row 6 [WS]:** [3HDC, **B**] **twice**. 8HDC, **B**, 6HDC, **B**, [4HDC, **B**] **twice**. 11HDC
- ← **Row 7 [RS]:** HDC in each ST across
- **Row 8 [WS]:** 5HDC, **B**, 4HDC, **B**, 7HDC, **B**, 4HDC, **B**, 6HDC, **B**, 2HDC, **B**, 11HDC
- ← **Row 9 [RS]:** HDC in each ST across
- **Row 10 [WS]:** 7HDC, **B**, 5HDC, **B**, 6HDC, **B**, 3HDC, **B**, 5HDC, **B**, 2HDC, **B**, 11HDC
- ← **Row 11 [RS]:** HDC in each ST across
- **Row 12 [WS]:** 10HDC, **B**, 4HDC, **B**, 6HDC, **B**, 3HDC, **B**, 1HDC, **B**, 3HDC, **B**, 12HDC
- ← **Row 13 [RS]:** HDC in each ST across
- **Row 14 [WS]:** 12HDC, **B**, 4HDC, **B**, 6HDC, **B**, 5HDC, **B**, 14HDC
- ← **Row 15 [RS]:** HDC in each ST across
- **Row 16 [WS]:** 6HDC, **B**, 1HDC, **B**, 4HDC, **B**, 5HDC, **B**, 6HDC, **B**, 1HDC, **B**, 16HDC
- ← **Row 17 [RS]:** HDC in each ST across
- **Row 18 [WS]:** 5HDC, **B**, 3HDC, **B**, 3HDC, **B**, 7HDC, **B**, 23HDC
- ← **Row 19 [RS]:** HDC in each ST across
- **Row 20 [WS]:** 5HDC, **B**, 6HDC, **B**, 10HDC, **B**, 21HDC
- ← **Row 21 [RS]:** HDC in each ST across
- **Row 22 [WS]:** 6HDC, **B**, [1HDC, **B**] **twice**. 14HDC, **B**, 19HDC
- ← **Row 23 [RS]:** HDC in each ST across
- **Row 24 [WS]:** 19HDC, **B**, 1HDC, **B**, 5HDC, **B**, 17HDC
- ← **Row 25 [RS]:** HDC in each ST across
- **Row 26 [WS]:** 17HDC, **B**, 5HDC, **B**, 4HDC, **B**, 16HDC
- ← **Row 27 [RS]:** HDC in each ST across
- **Row 28 [WS]:** 16HDC, **B**, 2HDC, **B**, 1HDC, **B**, 2HDC, **B**, 3HDC, **B**, 16HDC
- ← **Row 29 [RS]:** HDC in each ST across
- **Row 30 [WS]:** 16HDC, **B**, 2HDC, **B**, 4HDC, **B**, 3HDC, **B**, 16HDC



- ← **Row 31 [RS]:** HDC in each ST across
- **Row 32 [WS]:** 16HDC, **B**, 2HDC, **B**, [1HDC, **B**] *twice*. 4HDC, **B**, 16HDC
- ← **Row 33 [RS]:** HDC in each ST across
- **Row 34 [WS]:** 17HDC, **B**, 8HDC, **B**, 18HDC
- ← **Row 35 [RS]:** HDC in each ST across
- **Row 36 [WS]:** 19HDC, **B**, [1HDC, **B**] *twice*. 21HDC
- ← **Row 37 [RS]:** ← **Row 47 [RS]:** HDC in each ST across
- **Row 48 [WS]:** 7HDC, **B**, [1HDC, **B**] *twice*. 33HDC
- ← **Row 49 [RS]:** HDC in each ST across
- **Row 50 [WS]:** 5HDC, **B**, 7HDC, **B**, 31HDC
- ← **Row 51 [RS]:** HDC in each ST across
- **Row 52 [WS]:** 4HDC, **B**, 10HDC, **B**, 29HDC
- ← **Row 53 [RS]:** HDC in each ST across
- **Row 54 [WS]:** 4HDC, **B**, 3HDC, **B**, 1HDC, **B**, 4HDC, **B**, 29HDC
- ← **Row 55 [RS]:** HDC in each ST across
- **Row 56 [WS]:** 4HDC, **B**, 2HDC, **B**, [3HDC, **B**] *twice*. 29HDC
- ← **Row 57 [RS]:** HDC in each ST across
- **Row 58 [WS]:** [5HDC, **B**] *twice*. 3HDC, **B**, 29HDC
- ← **Row 59 [RS]:** HDC in each ST across
- **Row 60 [WS]:** 7HDC, **B**, 1HDC, **B**, 4HDC, **B**, 30HDC
- ← **Row 61 [RS]:** HDC in each ST across
- **Row 62 [WS]:** 12HDC, **B**, 32HDC
- ← **Row 63 [RS]:** HDC in each ST across
- **Row 64 [WS]:** 10HDC, **B**, 7HDC, **B**, [1HDC, **B**] *3 times*. 20HDC
- ← **Row 65 [RS]:** HDC in each ST across
- **Row 66 [WS]:** 9HDC, **B**, 6HDC, **B**, 9HDC, **B**, 18HDC
- ← **Row 67 [RS]:** HDC in each ST across
- **Row 68 [WS]:** 8HDC, **B**, 5HDC, **B**, 13HDC, **B**, 16HDC
- ← **Row 69 [RS]:** HDC in each ST across
- **Row 70 [WS]:** 7HDC, **B**, 4HDC, **B**, 16HDC, **B**, 15HDC
- ← **Row 71 [RS]:** HDC in each ST across
- **Row 72 [WS]:** 6HDC, **B**, 3HDC, **B**, 9HDC, **B**, [1HDC, **B**] *twice*. 5HDC, **B**, 14HDC
- ← **Row 73 [RS]:** HDC in each ST across
- **Row 74 [WS]:** 5HDC, **B**, 2HDC, **B**, 9HDC, **B**, 6HDC, **B**, 5HDC, **B**, 13HDC
- ← **Row 75 [RS]:** HDC in each ST across
- **Row 76 [WS]:** 4HDC, **B**, 2HDC, **B**, 8HDC, **B**, [4HDC, **B**] *twice*. 5HDC, **B**, 12HDC



- ← **Row 77 [RS]:** HDC in each ST across
- **Row 78 [WS]:** 3HDC, **B**, 2HDC, **B**, 8HDC, **B**, 4HDC, **B**, [5HDC, **B**] *twice*. 12HDC
- ← **Row 79 [RS]:** HDC in each ST across
- **Row 80 [WS]:** [2HDC, **B**] *twice*. 9HDC, **B**, 6HDC, **B**, 1HDC, **B**, 7HDC, **B**, 12HDC
- ← **Row 81 [RS]:** HDC in each ST across
- **Row 82 [WS]:** 1HDC, **B**, 2HDC, **B**, 11HDC, **B**, 14HDC, **B**, 13HDC
- ← **Row 83 [RS]:** HDC in each ST across
- **Row 84 [WS]:** 3HDC, **B**, 13HDC, **B**, 12HDC, **B**, 14HDC
- ← **Row 85 [RS]:** HDC in each ST across
- **Row 86 [WS]:** 2HDC, **B**, 16HDC, **B**, 8HDC, **B**, 16HDC
- ← **Row 87 [RS]:** HDC in each ST across
- **Row 88 [WS]:** **B**, 20HDC, **B**, [1HDC, **B**] *twice*. 19HDC
- ← **Row 89 [RS]:** ← **Row 99 [RS]:** HDC in each ST across
- **Row 100 [WS]:** 22HDC, **B**, [1HDC, **B**] *twice*. 18HDC
- ← **Row 101 [RS]:** HDC in each ST across
- **Row 102 [WS]:** 20HDC, **B**, 7HDC, **B**, 16HDC
- ← **Row 103 [RS]:** HDC in each ST across
- **Row 104 [WS]:** 19HDC, **B**, 4HDC, **B**, 1HDC, **B**, 2HDC, **B**, 15HDC
- ← **Row 105 [RS]:** HDC in each ST across
- **Row 106 [WS]:** 19HDC, **B**, 2HDC, **B**, 6HDC, **B**, 15HDC
- ← **Row 107 [RS]:** HDC in each ST across
- **Row 108 [WS]:** 19HDC, **B**, 2HDC, **B**, 5HDC, **B**, 16HDC
- ← **Row 109 [RS]:** HDC in each ST across
- **Row 110 [WS]:** 20HDC, **B**, 3HDC, **B**, 1HDC, **B**, 18HDC
- ← **Row 111 [RS]:** HDC in each ST across
- **Row 112 [WS]:** 22HDC, **B**, 22HDC
- ← **Row 113 [RS]:** HDC in each ST across
- **Row 114 [WS]:** (HDC) x 24, **B**, [1HDC, **B**] *9 times*. 2HDC
- ← **Row 115 [RS]:** HDC in each ST across
- **Row 116 [WS]:** 19HDC, **B**, [1HDC, **B**] *12 times*. 1HDC
- ← **Row 117 [RS]:** HDC in each ST across
- **Row 118 [WS]:** 16HDC, **B**, 28HDC
- ← **Row 119 [RS]:** HDC in each ST across
- **Row 120 [WS]:** 14HDC, **B**, 30HDC
- ← **Row 121 [RS]:** HDC in each ST across
- **Row 122 [WS]:** 12HDC, **B**, 6HDC, **B**, [1HDC, **B**] *3 times*. 19HDC





- ← **Row 123 [RS]:** HDC in each ST across
- **Row 124 [WS]:** 11HDC, **B**, 5HDC, **B**, 9HDC, **B**, 17HDC
- ← **Row 125 [RS]:** HDC in each ST across
- **Row 126 [WS]:** 10HDC, **B**, 4HDC, **B**, 13HDC, **B**, 15HDC
- ← **Row 127 [RS]:** HDC in each ST across
- **Row 128 [WS]:** 9HDC, **B**, 4HDC, **B**, 5HDC, **B**, [1HDC, **B**] *twice*. 5HDC, **B**, 14HDC
- ← **Row 129 [RS]:** HDC in each ST across
- **Row 130 [WS]:** 9HDC, **B**, 4HDC, **B**, 3HDC, **B**, 6HDC, **B**, 5HDC, **B**, 13HDC
- ← **Row 131 [RS]:** HDC in each ST across
- **Row 132 [WS]:** 9HDC, **B**, [4HDC, **B**] *twice*. 1HDC, **B**, [4HDC, **B**] *twice*. 13HDC
- ← **Row 133 [RS]:** HDC in each ST across
- **Row 134 [WS]:** 10HDC, **B**, 4HDC, **B**, 9HDC, **B**, 4HDC, **B**, 14HDC
- ← **Row 135 [RS]:** HDC in each ST across
- **Row 136 [WS]:** 11HDC, **B**, 5HDC, **B**, [1HDC, **B**] *3 times*. 5HDC, **B**, 15HDC
- ← **Row 137 [RS]:** HDC in each ST across
- **Row 138 [WS]:** 12HDC, **B**, 15HDC, **B**, 16HDC
- ← **Row 139 [RS]:** HDC in each ST across
- **Row 140 [WS]:** 14HDC, **B**, 11HDC, **B**, 18HDC
- ← **Row 141 [RS]:** HDC in each ST across
- **Row 142 [WS]:** 17HDC, **B**, [1HDC, **B**] *3 times*. 21HDC
- ← **Row 143 [RS]:** ← **Row 153 [RS]:** HDC in each ST across
- **Row 154 [WS]:** 26HDC, **B**, 18HDC
- ← **Row 155 [RS]:** HDC in each ST across
- **Row 156 [WS]:** 28HDC, **B**, 16HDC
- ← **Row 157 [RS]:** HDC in each ST across
- **Row 158 [WS]:** 30HDC, **B**, 14HDC
- ← **Row 159 [RS]:** HDC in each ST across
- **Row 160 [WS]:** 7HDC, **B**, 24HDC, **B**, 12HDC
- ← **Row 161 [RS]:** HDC in each ST across
- **Row 162 [WS]:** 2HDC, **B**, 6HDC, **B**, 24HDC, **B**, 10HDC
- ← **Row 163 [RS]:** HDC in each ST across
- **Row 164 [WS]:** [5HDC, **B**] *twice*. 24HDC, **B**, 8HDC
- ← **Row 165 [RS]:** HDC in each ST across
- **Row 166 [WS]:** 7HDC, **B**, 5HDC, **B**, 24HDC, **B**, 6HDC
- ← **Row 167 [RS]:** HDC in each ST across
- **Row 168 [WS]:** 9HDC, **B**, 5HDC, **B**, 16HDC, **B**, 1HDC, **B**, 4HDC, **B**, 5HDC



- ← **Row 169 [RS]:** HDC in each ST across
- **Row 170 [WS]:** 10HDC, **B**, 6HDC, **B**, 12HDC. [**B**, 4HDC] **3 times**.
- ← **Row 171 [RS]:** HDC in each ST across
- **Row 172 [WS]:** 10HDC, **B**, 8HDC, **B**, 9HDC, **B**, 2HDC, **B**, [3HDC, **B**] **twice**. 4HDC
- ← **Row 173 [RS]:** HDC in each ST across
- **Row 174 [WS]:** 2HDC, **B**, 1HDC, **B**, 5HDC, **B**, 10HDC, **B**, 7HDC, **B**, 2HDC, **B**, [3HDC, **B**] **twice**. 4HDC
- ← **Row 175 [RS]:** HDC in each ST across
- **Row 176 [WS]:** 1HDC, **B**, 6HDC, **B**, 14HDC, **B**, 5HDC, **B**, [4HDC, **B**] **twice**. 5HDC
- ← **Row 177 [RS]:** HDC in each ST across
- **Row 178 [WS]:** 2HDC, **B**, [1HDC, **B**] **twice**. 9HDC, **B**, [1HDC, **B**] **twice**. [4HDC, **B**] **twice**. 7HDC, **B**, 6HDC
- ← **Row 179 [RS]:** HDC in each ST across
- **Row 180 [WS]:** 14HDC, **B**, 7HDC, **B**, [4HDC, **B**] **twice**. [1HDC, **B**] **twice**. 8HDC
- ← **Row 181 [RS]:** HDC in each ST across
- **Row 182 [WS]:** 13HDC, **B**, 9HDC, **B**, 4HDC, **B**, 16HDC
- ← **Row 183 [RS]:** HDC in each ST across
- **Row 184 [WS]:** 13HDC, **B**, 3HDC, **B**, 5HDC, **B**, 4HDC, **B**, 16HDC
- ← **Row 185 [RS]:** HDC in each ST across
- **Row 186 [WS]:** 13HDC, **B**, 3HDC, **B**, 5HDC, **B**, 4HDC, **B**, 16HDC
- ← **Row 187 [RS]:** HDC in each ST across
- **Row 188 [WS]:** 14HDC, **B**, 3HDC, **B**, [1HDC, **B**] **twice**. 4HDC, **B**, 17HDC
- ← **Row 189 [RS]:** HDC in each ST across
- **Row 190 [WS]:** 16HDC, **B**, 9HDC, **B**, 18HDC
- ← **Row 191 [RS]:** HDC in each ST across
- **Row 192 [WS]:** 19HDC, **B**, [1HDC, **B**] **twice**. 21HDC
- ← **Row 193 [RS]:** ← **Row 203 [RS]:** HDC in each ST across
- **Row 204 [WS]:** 17HDC, **B**, [1HDC, **B**] **3 times**. 21HDC
- ← **Row 205 [RS]:** HDC in each ST across
- **Row 206 [WS]:** 14HDC, **B**, 11HDC, **B**, 18HDC
- ← **Row 207 [RS]:** HDC in each ST across
- **Row 208 [WS]:** 12HDC, **B**, 15HDC, **B**, 16HDC
- ← **Row 209 [RS]:** HDC in each ST across
- **Row 210 [WS]:** 11HDC, **B**, 5HDC, **B**, [1HDC, **B**] **3 times**. 5HDC, **B**, 15HDC
- ← **Row 211 [RS]:** HDC in each ST across
- **Row 212 [WS]:** 10HDC, **B**, 4HDC, **B**, 9HDC, **B**, 4HDC, **B**, 14HDC
- ← **Row 213 [RS]:** HDC in each ST across
- **Row 214 [WS]:** 9HDC, **B**, [4HDC, **B**] **twice**. 1HDC, **B**, [4HDC, **B**] **twice**. 13HDC





- ← **Row 215 [RS]:** HDC in each ST across
- **Row 216 [WS]:** 9HDC, **B**, 4HDC, **B**, 3HDC, **B**, 6HDC, **B**, 5HDC, **B**, 13HDC
- ← **Row 217 [RS]:** HDC in each ST across
- **Row 218 [WS]:** 9HDC, **B**, 4HDC, **B**, 5HDC, **B**, [1HDC, **B**] *twice*. 5HDC, **B**, 14HDC
- ← **Row 219 [RS]:** HDC in each ST across
- **Row 220 [WS]:** 10HDC, **B**, 4HDC, **B**, 13HDC, **B**, 15HDC
- ← **Row 221 [RS]:** HDC in each ST across
- **Row 222 [WS]:** 11HDC, **B**, 5HDC, **B**, 9HDC, **B**, 17HDC
- ← **Row 223 [RS]:** HDC in each ST across
- **Row 224 [WS]:** 12HDC, **B**, 6HDC, **B**, [1HDC, **B**] *3 times*. 19HDC
- ← **Row 225 [RS]:** HDC in each ST across
- **Row 226 [WS]:** 14HDC, **B**, 30HDC
- ← **Row 227 [RS]:** HDC in each ST across
- **Row 228 [WS]:** 16HDC, **B**, 28HDC
- ← **Row 229 [RS]:** HDC in each ST across
- **Row 230 [WS]:** 19HDC, **B**, [1HDC, **B**] *12 times*. 1HDC
- ← **Row 231 [RS]:** HDC in each ST across
- **Row 232 [WS]:** (HDC) x 24, **B**, [1HDC, **B**] *9 times*. 2HDC
- ← **Row 233 [RS]:** HDC in each ST across
- **Row 234 [WS]:** 22HDC, **B**, 22HDC
- ← **Row 235 [RS]:** HDC in each ST across
- **Row 236 [WS]:** 20HDC, **B**, 3HDC, **B**, 1HDC, **B**, 18HDC
- ← **Row 237 [RS]:** HDC in each ST across
- **Row 238 [WS]:** 19HDC, **B**, 2HDC, **B**, 5HDC, **B**, 16HDC
- ← **Row 239 [RS]:** HDC in each ST across
- **Row 240 [WS]:** 19HDC, **B**, 2HDC, **B**, 6HDC, **B**, 15HDC
- ← **Row 241 [RS]:** HDC in each ST across
- **Row 242 [WS]:** 19HDC, **B**, 4HDC, **B**, 1HDC, **B**, 2HDC, **B**, 15HDC
- ← **Row 243 [RS]:** HDC in each ST across
- **Row 244 [WS]:** 20HDC, **B**, 7HDC, **B**, 16HDC
- ← **Row 245 [RS]:** HDC in each ST across
- **Row 246 [WS]:** 22HDC, **B**, [1HDC, **B**] *twice*. 18HDC
- ← **Row 247 [RS]:** ← **Row 257 [RS]:** HDC in each ST across
- **Row 258 [WS]:** **B**, 20HDC, **B**, [1HDC, **B**] *twice*. 19HDC
- ← **Row 259 [RS]:** HDC in each ST across
- **Row 260 [WS]:** 2HDC, **B**, 16HDC, **B**, 8HDC, **B**, 16HDC



- ← **Row 261 [RS]:** HDC in each ST across
- **Row 262 [WS]:** 3HDC, **B**, 13HDC, **B**, 12HDC, **B**, 14HDC
- ← **Row 263 [RS]:** HDC in each ST across
- **Row 264 [WS]:** 1HDC, **B**, 2HDC, **B**, 11HDC, **B**, 14HDC, **B**, 13HDC
- ← **Row 265 [RS]:** HDC in each ST across
- **Row 266 [WS]:** [2HDC, **B**] *twice*. 9HDC, **B**, 6HDC, **B**, 1HDC, **B**, 7HDC, **B**, 12HDC
- ← **Row 267 [RS]:** HDC in each ST across
- **Row 268 [WS]:** 3HDC, **B**, 2HDC, **B**, 8HDC, **B**, 4HDC, **B**, [5HDC, **B**] *twice*. 12HDC
- ← **Row 269 [RS]:** HDC in each ST across
- **Row 270 [WS]:** 4HDC, **B**, 2HDC, **B**, 8HDC, **B**, [4HDC, **B**] *twice*. 5HDC, **B**, 12HDC
- ← **Row 271 [RS]:** HDC in each ST across
- **Row 272 [WS]:** 5HDC, **B**, 2HDC, **B**, 9HDC, **B**, 6HDC, **B**, 5HDC, **B**, 13HDC
- ← **Row 273 [RS]:** HDC in each ST across
- **Row 274 [WS]:** 6HDC, **B**, 3HDC, **B**, 9HDC, **B**, [1HDC, **B**] *twice*. 5HDC, **B**, 14HDC
- ← **Row 275 [RS]:** HDC in each ST across
- **Row 276 [WS]:** 7HDC, **B**, 4HDC, **B**, 16HDC, **B**, 15HDC
- ← **Row 277 [RS]:** HDC in each ST across
- **Row 278 [WS]:** 8HDC, **B**, 5HDC, **B**, 13HDC, **B**, 16HDC
- ← **Row 279 [RS]:** HDC in each ST across
- **Row 280 [WS]:** 9HDC, **B**, 6HDC, **B**, 9HDC, **B**, 18HDC
- ← **Row 281 [RS]:** HDC in each ST across
- **Row 282 [WS]:** 10HDC, **B**, 7HDC, **B**, [1HDC, **B**] *3 times*. 20HDC
- ← **Row 283 [RS]:** HDC in each ST across
- **Row 284 [WS]:** 12HDC, **B**, 32HDC
- ← **Row 285 [RS]:** HDC in each ST across
- **Row 286 [WS]:** 7HDC, **B**, 1HDC, **B**, 4HDC, **B**, 30HDC
- ← **Row 287 [RS]:** HDC in each ST across
- **Row 288 [WS]:** [5HDC, **B**] *twice*. 3HDC, **B**, 29HDC
- ← **Row 289 [RS]:** HDC in each ST across
- **Row 290 [WS]:** 4HDC, **B**, 2HDC, **B**, [3HDC, **B**] *twice*. 29HDC
- ← **Row 291 [RS]:** HDC in each ST across
- **Row 292 [WS]:** 4HDC, **B**, 3HDC, **B**, 1HDC, **B**, 4HDC, **B**, 29HDC
- ← **Row 293 [RS]:** HDC in each ST across
- **Row 294 [WS]:** 4HDC, **B**, 10HDC, **B**, 29HDC
- ← **Row 295 [RS]:** HDC in each ST across
- **Row 296 [WS]:** 5HDC, **B**, 7HDC, **B**, 31HDC



- ← **Row 297 [RS]:** HDC in each ST across
- **Row 298 [WS]:** 7HDC, **B**, [1HDC, **B**] *twice*. 33HDC
- ← **Row 299 [RS]:** ← **Row 309 [RS]:** HDC in each ST across.
- **Row 310 [WS]:** 19HDC, **B**, [1HDC, **B**] *twice*. 21HDC
- ← **Row 311 [RS]:** HDC in each ST across
- **Row 312 [WS]:** 17HDC, **B**, 8HDC, **B**, 18HDC
- ← **Row 313 [RS]:** HDC in each ST across
- **Row 314 [WS]:** 16HDC, **B**, 2HDC, **B**, [1HDC, **B**] *twice*. 4HDC, **B**, 16HDC
- ← **Row 315 [RS]:** HDC in each ST across
- **Row 316 [WS]:** 16HDC, **B**, 2HDC, **B**, 4HDC, **B**, 3HDC, **B**, 16HDC
- ← **Row 317 [RS]:** HDC in each ST across
- **Row 318 [WS]:** 16HDC, **B**, 2HDC, **B**, 1HDC, **B**, 2HDC, **B**, 3HDC, **B**, 16HDC
- ← **Row 319 [RS]:** HDC in each ST across
- **Row 320 [WS]:** 17HDC, **B**, 5HDC, **B**, 4HDC, **B**, 16HDC
- ← **Row 321 [RS]:** HDC in each ST across
- **Row 322 [WS]:** 19HDC, **B**, 1HDC, **B**, 5HDC, **B**, 17HDC
- ← **Row 323 [RS]:** HDC in each ST across
- **Row 324 [WS]:** 6HDC, **B**, [1HDC, **B**] *twice*. 14HDC, **B**, 19HDC
- ← **Row 325 [RS]:** HDC in each ST across
- **Row 326 [WS]:** 5HDC, **B**, 6HDC, **B**, 10HDC, **B**, 21HDC
- ← **Row 327 [RS]:** HDC in each ST across
- **Row 328 [WS]:** 5HDC, **B**, [3HDC, **B**] *twice*. 7HDC, **B**, 23HDC
- ← **Row 329 [RS]:** HDC in each ST across
- **Row 330 [WS]:** 6HDC, **B**, 1HDC, **B**, 4HDC, **B**, 5HDC, **B**, 6HDC, **B**, 1HDC, **B**, 16HDC
- ← **Row 331 [RS]:** HDC in each ST across
- **Row 332 [WS]:** 12HDC, **B**, 4HDC, **B**, 6HDC, **B**, 5HDC, **B**, 14HDC
- ← **Row 333 [RS]:** HDC in each ST across
- **Row 334 [WS]:** 10HDC, **B**, 4HDC, **B**, 6HDC, **B**, 3HDC, **B**, 1HDC, **B**, 3HDC, **B**, 12HDC
- ← **Row 335 [RS]:** HDC in each ST across
- **Row 336 [WS]:** 7HDC, **B**, 5HDC, **B**, 6HDC, **B**, 3HDC, **B**, 5HDC, **B**, 2HDC, **B**, 11HDC
- ← **Row 337 [RS]:** HDC in each ST across
- **Row 338 [WS]:** 5HDC, **B**, 4HDC, **B**, 7HDC, **B**, 4HDC, **B**, 6HDC, **B**, 2HDC, **B**, 11HDC
- ← **Row 339 [RS]:** HDC in each ST across
- **Row 340 [WS]:** [3HDC, **B**] *twice*. 8HDC, **B**, 6HDC, **B**, [4HDC, **B**] *twice*. 11HDC
- ← **Row 341 [RS]:** HDC in each ST across
- **Row 342 [WS]:** 1HDC, **B**, 2HDC, **B**, [9HDC, **B**] *twice*. 7HDC, **B**, 12HDC



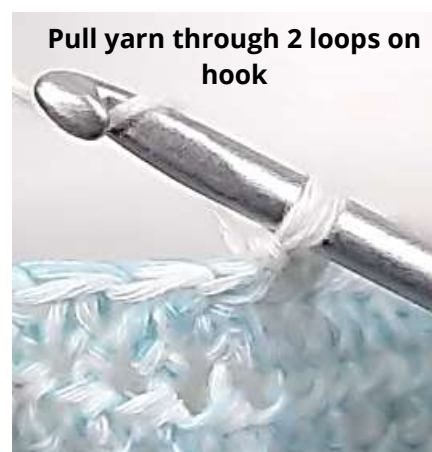
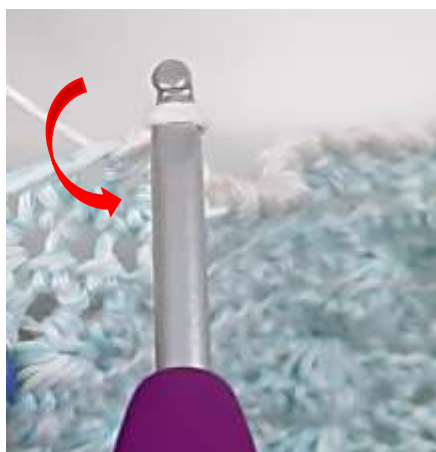
← **Row 343 [RS]:** HDC in each ST across

→ **Row 344 [WS]:** 2HDC, **B**, 9HDC, **B**, 13HDC, **B**, [1HDC, **B**] *twice*. 14HDC

← **Row 345 [RS]:** HDC in each ST across. **Do not** fasten off yarn. **Do not** turn work. With RS facing CH1 and follow border instructions.

## BORDER

**Twisted Single Crochet Border** - \* Insert hook into stitch, grab yarn and pull through *loosely* (2 loops on hook – make sure that your loops are not tight). Rotate the hook anticlockwise 360 degrees. Yarn over and pull through the 2 loops on hook. The twisted SC stitch is complete – Repeat from \* in each ST around outside edge of scarf. SLST in the 1<sup>st</sup> SC made to join. Fasten off yarn and weave in ends.



This pattern is property of Cute Crochet Makes and may not be copied, resold, shared or made tutorials of.

You may sell items made using this pattern, but please credit Cute Crochet Makes as the designer.

You can find more patterns on my website

[www.cutecrochetmakes.com](http://www.cutecrochetmakes.com)

