

SWEETHEART CUSHION

YARN

Aldi Chunky 100g 100% Acrylic yarn
3 balls of pink - 227g used
2 balls of cream - 240g used

HOOK - 8mm

12" Cushion Insert

Cushion measures – approx. 35cm
x 35cm

This crochet pattern uses US
crochet terms.



ABBREVIATIONS

CH = Chain

SC = Single Crochet

B = Bobble Stitch

SLST = Slip Stitch

[] = Repeat Pattern

(RS) = Right Side of Work

(WS) = Wrong Side of Work

BOBBLE STITCH - This ST will always be worked on the **WRONG SIDE** of your work. Yarn over (YO), insert hook into ST, pull up a loop. YO, and pull through 2 loops - 2 loops on hook. Repeat 3 more times in the same ST - 5 loops on hook. YO and pull through all 5 loops. Fasten off bobble colour at the end of each row.

COLOUR CHANGES

Always change colour in the last YO of the stitch before the allocated colour change.

This pattern is the property of CuteCrochetMakes and may not be shared, copied or made tutorials of. You may sell items made from this pattern but please credit CuteCrochetMakes as the designer.

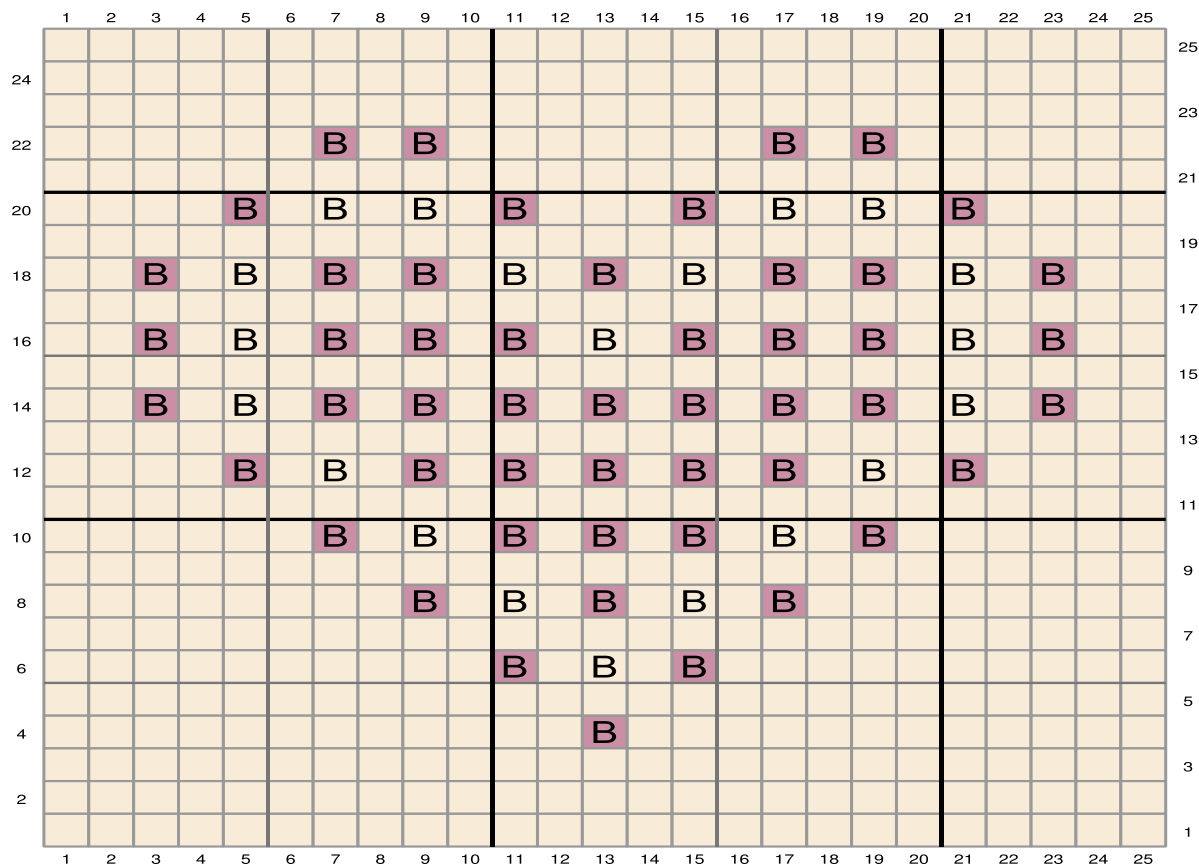
www.cutecrochetmakes.com

www.instagram.com/cutecrochetmakes

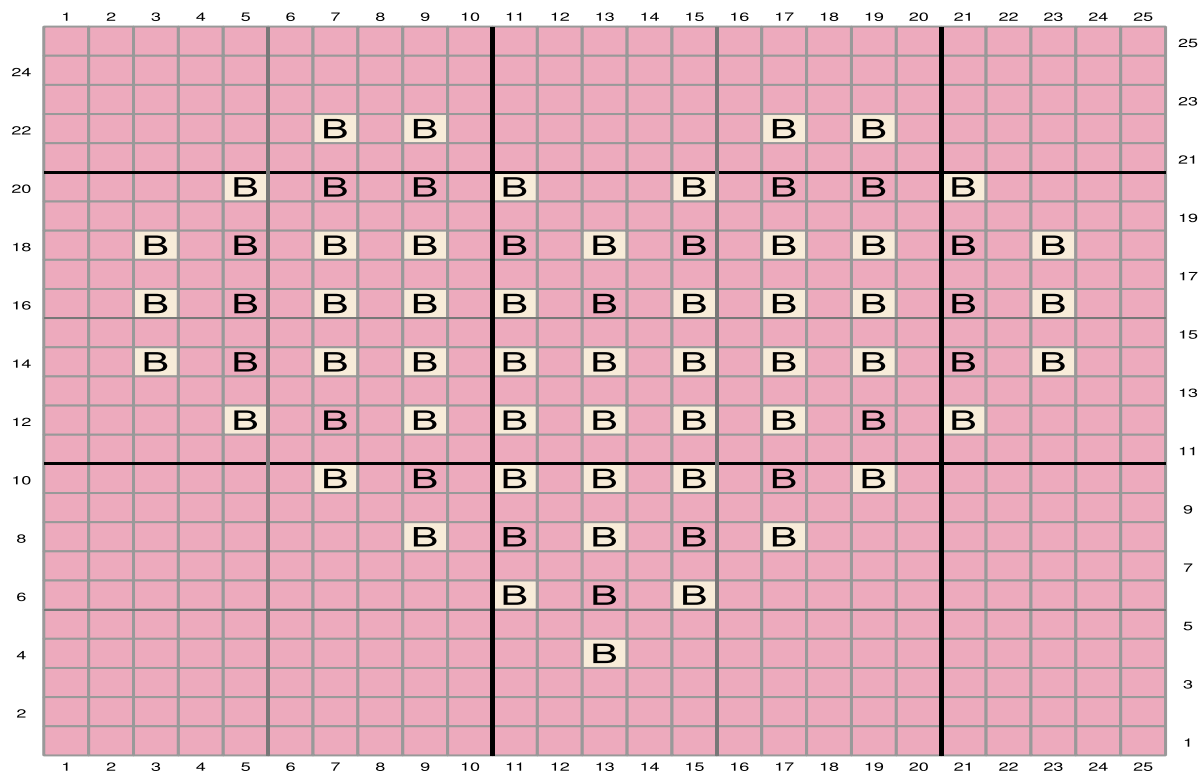
If you require any help, please message through the above websites or at cutecrochetmakes@gmail.com

GPSR statement - <https://www.cutecrochetmakes.com/gpsr>





- B Pink Bobble
- B Cream SC
- B Cream Bobble



- B Cream Bobble
- B Pink SC
- B Pink Bobble



CUSHION FRONT PANEL

Colour abbreviations used –

25C = 1SC in cream in the next 25sts. 1C = 1SC in cream 1P = 1SC in pink

CB = Cream Bobble **PB** = Pink Bobble

1. **(RS).** – 3. **(RS).** Using Cream CH26, SC in the 2nd CH from the hook and in each CH across. *25sts here and each row throughout the pattern.*
4. **(WS).** 12C, **PB**, 12C.
5. **(RS).** 25C.
6. **(WS).** 10C, **PB**, 1C, **CB**, 1C, **PB**, 10C.
7. **(RS).** 25C.
8. **(WS).** 8C. [**PB**, 1C, **CB**, 1C] *twice*. **PB**, 8C.
9. **(RS).** 25C.
10. **(WS).** 6C, **PB**, 1C, **CB**, 1C. [**PB**, 1C] *3 times*. **CB**, 1C, **PB**, 6C.
11. **(RS).** 25C.
12. **(WS).** 4C, **PB**, 1C, **CB**, 1C. [**PB**, 1C] *5 times*. **CB**, 1C, **PB**, 4C.
13. **(RS).** 25C.
14. **(WS).** 2C, **PB**, 1C, **CB**, 1C. [**PB**, 1C] *7 times*. **CB**, 1C, **PB**, 2C.
15. **(RS).** 25C.
16. **(WS).** 2C, **PB**, 1C, **CB**, 1C. [**PB**, 1C] *3 times*. **CB**, 1C, [**PB**, 1C] *3 times*. **CB**, 1C, **PB**, 2C.
17. **(RS).** 25C.
18. **(WS).** 2C, **PB**, 1C, **CB**, 1C. [**PB**, 1C] *twice*. **CB**, 1C, **PB**, 1C, **CB**, 1C. [**PB**, 1C] *twice*. **CB**, 1C, **PB**, 2C.
19. **(RS).** 25C.
20. **(WS).** 4C, **PB**. [1C, **CB**] *twice*. 1C, **PB**, 3C, **PB**. [1C, **CB**] *twice*. 1C. **PB**, 4C.
21. **(RS).** 25C.
22. **(WS).** 6C, **PB**, 1C, **PB**, 7C, **PB**, 1C, **PB**, 6C.
23. **(RS).** – 24. **(WS).** 25C.
25. **(RS).** 25C. CH1, rotate work and make 1SC in each row end. CH1, rotate work and make 1SC in ST across. CH1, rotate work and make 1SC in each row end up. CH1 and SLST in the 1st SC made to join. *Each side has 25sts with CH1 in each corner.*
26. **(RS).** (CH1, SC). * SC in each ST across with (SC, CH1, SC) in the CH1 space. Repeat from * around. SLST in the 1st SC made to join. Fasten off yarn. *Each side has 27sts with CH1 in each corner.*
27. **(RS).** Join PINK in any corner CH1 space with a SC. * Skip the 1st ST. Working in the **BACK LOOPS** make 1SC in each ST across. (SC, CH1, SC) in the CH1 space. Repeat from * around only finishing in the beginning corner space with (SC, CH1) and SLST in the 1st SC made to join. Fasten off yarn. *Each side has 28sts with CH1 in each corner.*



CUSHION BACK PANEL

This is the same as the front panel only the colours are reversed.

1. **(RS).** – **3. (RS).** Using Pink CH26, SC in the 2nd CH from the hook and in each CH across. 25sts here and each row throughout the pattern.
4. **(WS).** 12P, **CB**, 12P.
5. **(RS).** 25P.
6. **(WS).** 10P, **CB**, 1P, **PB**, 1P, **CB**, 10P.
7. **(RS).** 25P.
8. **(WS).** 8P. [**CB**, 1P, **PB**, 1P] **twice.** **CB**, 8P.
9. **(RS).** 25P.
10. **(WS).** 6P, **CB**, 1P, **PB**, 1P. [**CB**, 1P] **3 times.** **PB**, 1P, **CB**, 6P.
11. **(RS).** 25P.
12. **(WS).** 4P, **CB**, 1P, **PB**, 1P. [**CB**, 1P] **5 times.** **PB**, 1P, **CB**, 4P.
13. **(RS).** 25P.
14. **(WS).** 2P, **CB**, 1P, **PB**, 1P. [**CB**, 1P] **7 times.** **PB**, 1P, **CB**, 2P.
15. **(RS).** 25P.
16. **(WS).** 2P, **CB**, 1P, **PB**, 1P. [**CB**, 1P] **3 times.** **PB**, 1P, [**CB**, 1P] **3 times.** **PB**, 1P, **CB**, 2P.
17. **(RS).** 25C.
18. **(WS).** 2P, **CB**, 1P, **PB**, 1P. [**CB**, 1P] **twice.** **PB**, 1P, **CB**, 1P, **PB**, 1P. [**CB**, 1P] **twice.** **PB**, 1P, **CB**, 2P.
19. **(RS).** 25C.
20. **(WS).** 4P, **CB**. [1P, **PB**] **twice.** 1P, **CB**, 3P, **CB**. [1P, **PB**] **twice.** 1P. **CB**, 4P.
21. **(RS).** 25P.
22. **(WS).** 6P, **CB**, 1P, **CB**, 7P, **CB**, 1P, **CB**, 6P.
23. **(RS).** – **24. (WS).** 25P.
25. **(RS).** – **26 (RS).** Repeat rows 25 – 26 of cushion front panel.
27. **(RS).** Join Cream and repeat row 27 of cushion front panel.
1. **JOINING** – Place WS of panels together. Join Cream in the top left corner space of both panels with a SC. * SC in the front loop of the cream panel and in the back loop of the pink panel – *the inside loops*. Repeat this in each ST across. (SC, CH1, SC) in the corner space. Repeat from * for the next 2 sides. Insert cushion pad. Then repeat from * across only finishing in the beginning corner with (SC, CH1) and SLST in the 1st SC made to join. Fasten off yarn. *Each side has 30sts with CH1 in each corner.*
2. **BORDER** – Join Pink in any corner space with a * SLST, CH2. Skip the next ST. Repeat from * around making a SLST, CH2 in each CH1 space. SLST in the 1st SLST made to join. Fasten off yarn. Weave in ends.

