

Oops Beach Bag



Oops! Square

Lisa Hooper @cutecrochetmakes

This pattern is written in UK terms

You will need:

Hook – 5mm

Knitcraft Cotton Blend DK in Bright Blue, Yellow, Pink, Mustard, Denim, Red and Coral.

Small amounts of Light Blue and Purple for the sprinkles.

Abbreviations

- ST(s) – stitch(es)
- SLST – slip stitch
- DC – double crochet
- TR – treble crochet
- HTR – half treble crochet
- XHTR – crossed half treble crochet
- MR – magic ring



Bobble ST – (5TR together). * YO insert hook into stitch, YO and pull through. YO and pull through first two stitches on hook (2 hoops remaining on hook). Repeat from * 4 more times in the same stitch (6 loops on hook). YO and pull through all 6 loops.

DC2TOG – double crochet decrease. Insert hook into ST, YO and pull through (2 loops on hook). Insert hook into next ST. YO and pull through (3 loops on hook). YO and pull through all 3 loops.

Colour Changes – change colour in the ST before you start the new colour. Insert hook and YO (2 loops on hook) then YO in the new colour. Always keep tail ends on the **WRONG** side of your work. Carry colours across the back to avoid having lots of ends to sew in.

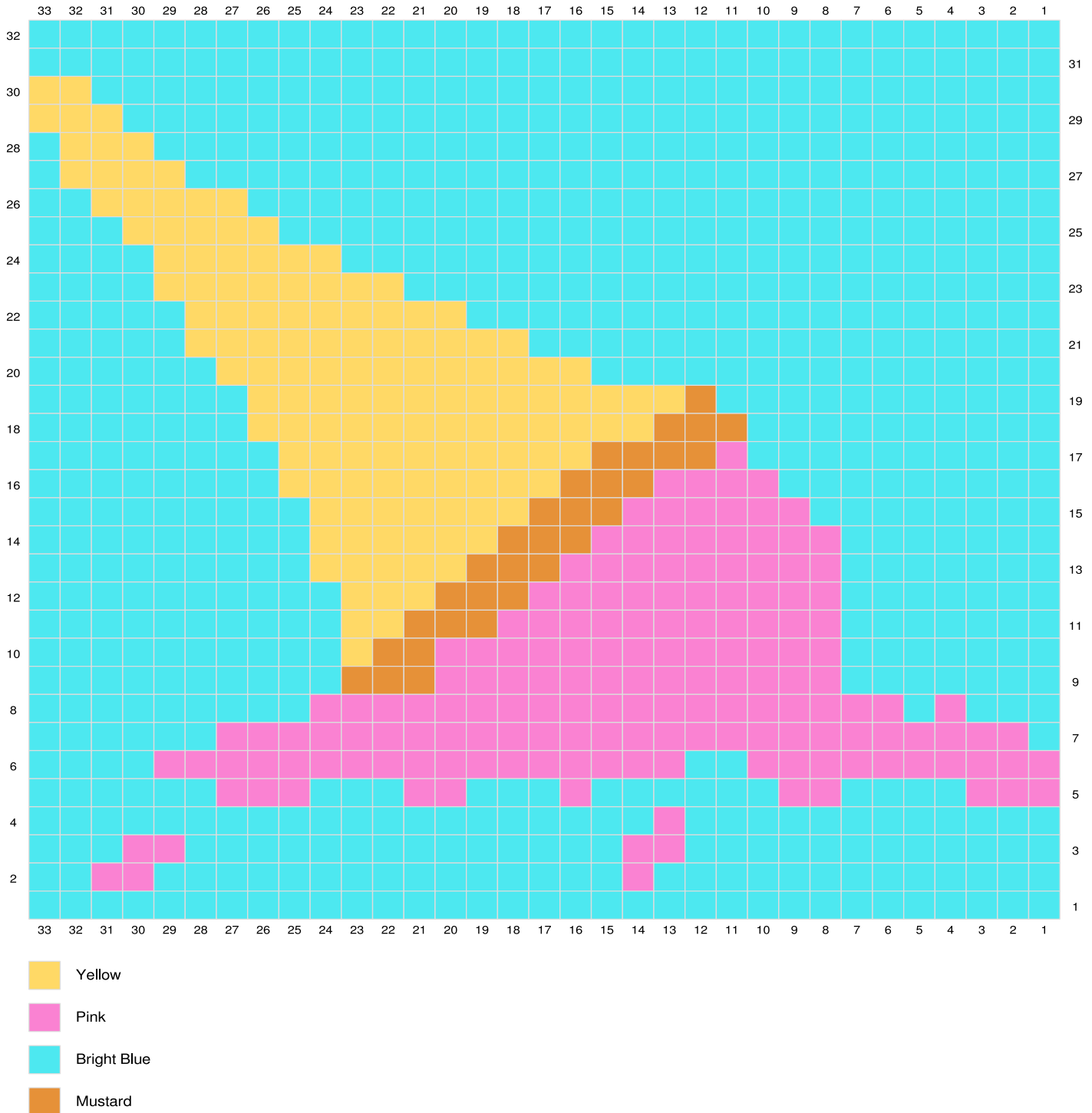


Finished size is 20cm x 20cm



Oops Chart

Each square represents one stitch. All stitches are DC.



Each square represents the number of DC stitches to be made in that colour.

CH1 and Turn at the end of each row. CH1 does not count as a ST throughout.



CH34. Starting in the 2nd CH from the hook start Row 1. (Each Row has 33sts throughout)

← Row 1 [RS]:	33
→ Row 2 [WS]:	2 2 15 1 13
← Row 3 [RS]:	12 2 14 2 3
→ Row 4 [WS]:	20 1 12
← Row 5 [RS]:	3 4 2 6 1 3 2 3 3 6
→ Row 6 [WS]:	4 17 2 10
← Row 7 [RS]:	1 26 6
→ Row 8 [WS]:	9 19 1 1 3
← Row 9 [RS]:	7 13 3 10
→ Row 10 [WS]:	10 1 2 13 7
← Row 11 [RS]:	7 11 3 2 10
→ Row 12 [WS]:	10 3 3 10 7
← Row 13 [RS]:	7 9 3 5 9
→ Row 14 [WS]:	9 6 3 8 7
← Row 15 [RS]:	8 6 3 7 9
→ Row 16 [WS]:	8 9 3 4 9
← Row 17 [RS]:	10 1 4 10 8
→ Row 18 [WS]:	7 13 3 10
← Row 19 [RS]:	11 1 14 7
→ Row 20 [WS]:	6 12 15
← Row 21 [RS]:	17 11 5
→ Row 22 [WS]:	5 9 19
← Row 23 [RS]:	21 8 4
→ Row 24 [WS]:	4 6 23
← Row 25 [RS]:	25 5 3
→ Row 26 [WS]:	2 5 26
← Row 27 [RS]:	28 4 1
→ Row 28 [WS]:	1 3 29
← Row 29 [RS]:	30 3
→ Row 30 [WS]:	2 31
← Row 31 [RS]:	33
→ Row 32 [WS]:	33

Row 1 measures approx 16cm. If your 1st row is a lot longer you may want to use the next hook size down.



Border

1. Turn work (RS). DC in each ST across. In the last ST (DC, CH2, DC). Working down the side of the square make 1DC in each ST with (DC, CH2, DC) in the last ST. Make 1DC in each ST across the bottom of the square with (DC, CH2, DC) in the last ST. Finally work 1DC in each ST up the side of the square finishing with a (DC, CH2) in the last ST. SLST in the 1st DC made to join. Fasten off yarn. (Each side has 33sts with CH2 in each corner).
2. With the **WRONG SIDE** facing join **DENIM** in any CH2 corner space. (DC, CH1, DC). ** DC in the next 2sts. Bobble in the following ST. * DC in the next 3sts, Bobble. Repeat from * across finishing with a DC in the last 2sts. (DC, CH1, DC) in the corner CH2 space. Repeat from ** around the square finishing with a SLST in the 1st DC made to join. Fasten off yarn. (Each side has 8 bobbles).



3. With the **RIGHT SIDE** facing join **CORAL** in any CH1 corner space. (HTR, CH1, HTR). ** Make a long HTR in the next ST – so it goes into the **BRIGHT BLUE** row 1 of the border. * Skip the next ST and the bobble ST. Work a HTR in the following ST, then work a HTR in the 1st ST you skipped. (The one before the bobble – this creates a XHTR). Long HTR in the next ST (the centre ST between the bobbles). Repeat from * across and make (HTR, CH1, HTR) in the corner CH1 space. Repeat from ** for the remaining sides. Finish with a SLST in the top of the 1st HTR made in the beginning corner. Fasten off yarn. (Each side has 27sts with CH1 in each corner).



4. With the **RIGHT SIDE** facing join **YELLOW** in any CH1 corner space. (DC, CH1, DC). Make 1DC in each ST around with (DC, CH1, DC) in each corner space. SLST in the 1st DC made to join. Fasten off yarn. (Each side has 29sts with CH1 in each corner).



Cherry

1. Using **RED** in a MR make 4DC. SLST in the 1st DC made to join. (4sts).
2. CH1 – does not count as a ST throughout. Make (2DC) in each ST around. SLST in the 1st DC made to join. (8sts).
3. CH1. [(2DC), DC] 4 times. SLST in the 1st DC made to join. (12sts).
4. CH1. [DC2TOG, DC] 4 times. SLST in the 1st DC2TOG made to join. (8sts).
5. CH1. [DC2TOG] 4 times. SLST in the top of the 1st DC2TOG to join. Fasten off yarn leaving a long tail to sew onto square. (4sts).
6. Using the long tail close the hole. Sew cherry onto square as in main photo, sewing through the edges of the cherry. Pull yarn through the side of the cherry for the stalk. Make a knot about 1cm up and sew through the square to hold it in place.



Ice-cream

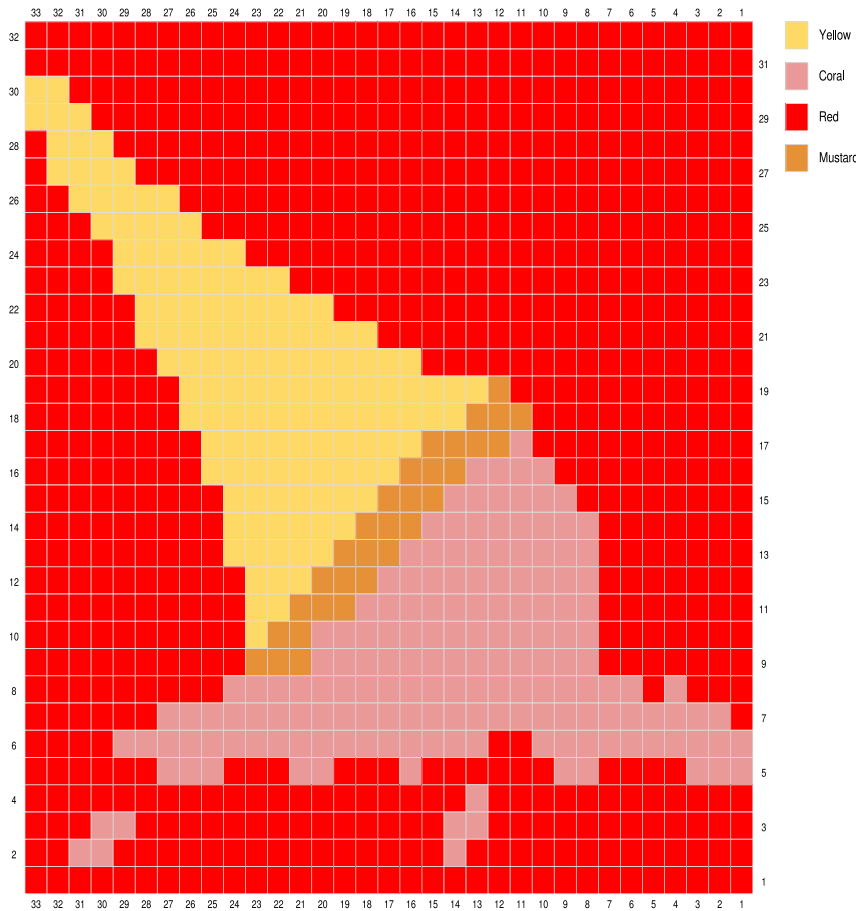
1. **Cone details** - Cut a long length of **MUSTARD**. Sew 7 lines vertically over the cone. Then sew 7 lines horizontally crossing over the previous ones.
2. Using small length of **LIGHT BLUE**, **PURPLE** and **YELLOW** sew small dashes over the ice cream for the sprinkles.



Coral Oops Square



Make 2. CH34 and starting in the 2nd CH from the hook begin Row 1.



← Row 1 [RS]:	33
→ Row 2 [WS]:	2 2 15 1 13
← Row 3 [RS]:	12 2 14 2 3
→ Row 4 [WS]:	20 1 12
← Row 5 [RS]:	3 4 2 6 1 3 2 3 3 6
→ Row 6 [WS]:	4 17 2 10
← Row 7 [RS]:	1 26 6
→ Row 8 [WS]:	9 19 1 1 3
← Row 9 [RS]:	7 13 3 10
→ Row 10 [WS]:	10 1 2 13 7
← Row 11 [RS]:	7 11 3 2 10
→ Row 12 [WS]:	10 3 3 10 7
← Row 13 [RS]:	7 9 3 5 9
→ Row 14 [WS]:	9 6 3 8 7
← Row 15 [RS]:	8 6 3 7 9
→ Row 16 [WS]:	8 9 3 4 9
← Row 17 [RS]:	10 1 4 10 8
→ Row 18 [WS]:	7 13 3 10
← Row 19 [RS]:	11 1 14 7
→ Row 20 [WS]:	6 12 15
← Row 21 [RS]:	17 11 5
→ Row 22 [WS]:	5 9 19
← Row 23 [RS]:	21 8 4
→ Row 24 [WS]:	4 6 23
← Row 25 [RS]:	25 5 3
→ Row 26 [WS]:	2 5 26
← Row 27 [RS]:	28 4 1
→ Row 28 [WS]:	1 3 29
← Row 29 [RS]:	30 3
→ Row 30 [WS]:	2 31
← Row 31 [RS]:	33
→ Row 32 [WS]:	33

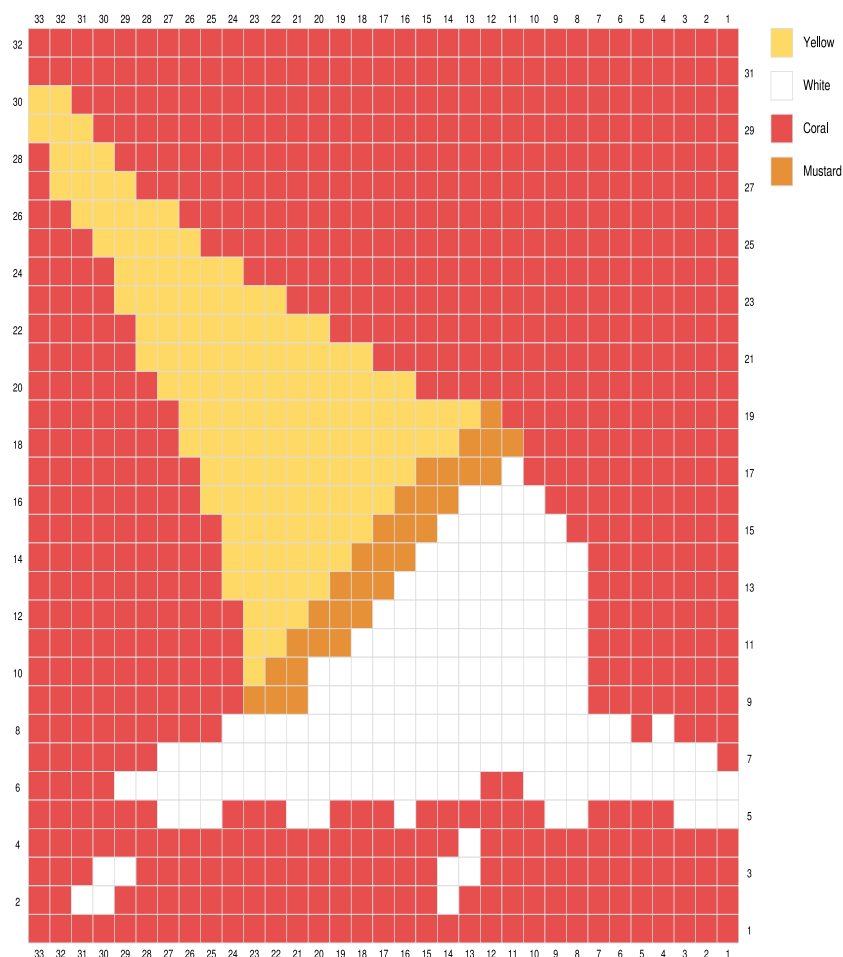
Repeat border as in Blue square using Yellow, White and Pink.



Coral Oops Square



Make 2. CH34 and starting in the 2nd CH from the hook begin Row 1.



Repeat border as in Blue square using Pink, Bright Blue and Purple.

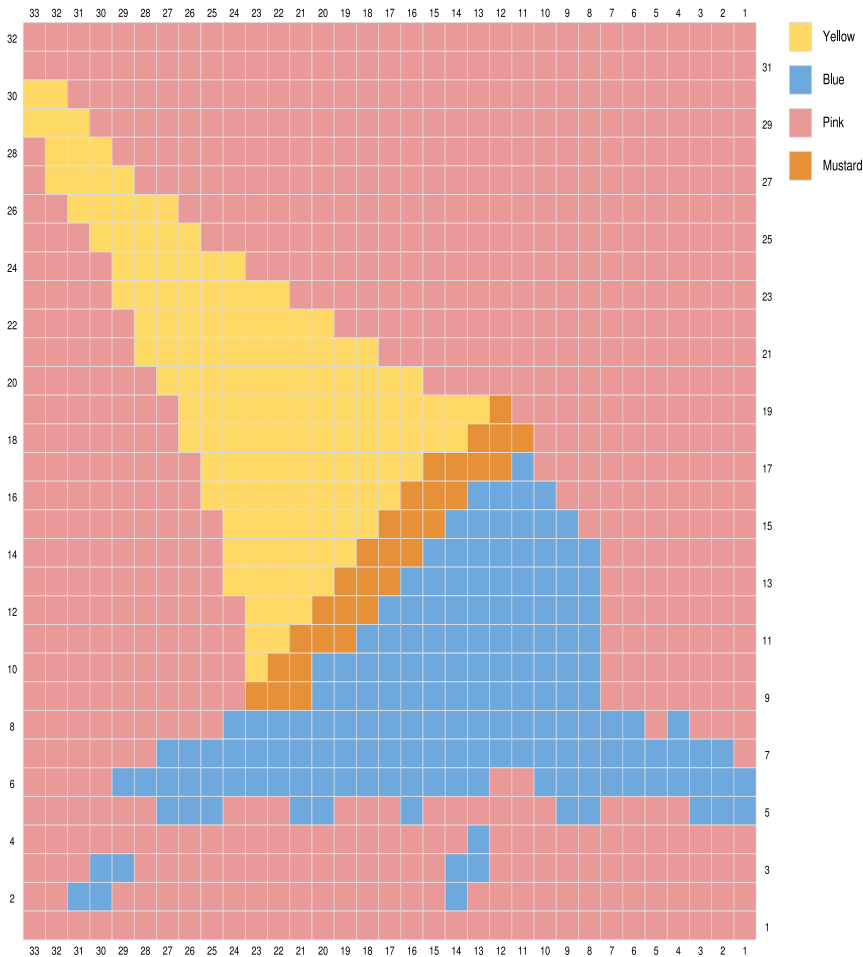
← Row 1 [RS]:	33
→ Row 2 [WS]:	2 2 15 1 13
← Row 3 [RS]:	12 2 14 2 3
→ Row 4 [WS]:	20 1 12
← Row 5 [RS]:	3 4 2 6 1 3 2 3 3 6
→ Row 6 [WS]:	4 17 2 10
← Row 7 [RS]:	1 26 6
→ Row 8 [WS]:	9 19 1 1 3
← Row 9 [RS]:	7 13 3 10
→ Row 10 [WS]:	10 1 2 13 7
← Row 11 [RS]:	7 11 3 2 10
→ Row 12 [WS]:	10 3 3 10 7
← Row 13 [RS]:	7 9 3 5 9
→ Row 14 [WS]:	9 6 3 8 7
← Row 15 [RS]:	8 6 3 7 9
→ Row 16 [WS]:	8 9 3 4 9
← Row 17 [RS]:	10 1 4 10 8
→ Row 18 [WS]:	7 13 3 10
← Row 19 [RS]:	11 1 14 7
→ Row 20 [WS]:	6 12 15
← Row 21 [RS]:	17 11 5
→ Row 22 [WS]:	5 9 19
← Row 23 [RS]:	21 8 4
→ Row 24 [WS]:	4 6 23
← Row 25 [RS]:	25 5 3
→ Row 26 [WS]:	2 5 26
← Row 27 [RS]:	28 4 1
→ Row 28 [WS]:	1 3 29
← Row 29 [RS]:	30 3
→ Row 30 [WS]:	2 31
← Row 31 [RS]:	33
→ Row 32 [WS]:	33



Pink Oops Square



Make 2. CH34 and starting in the 2nd CH from the hook begin Row 1.



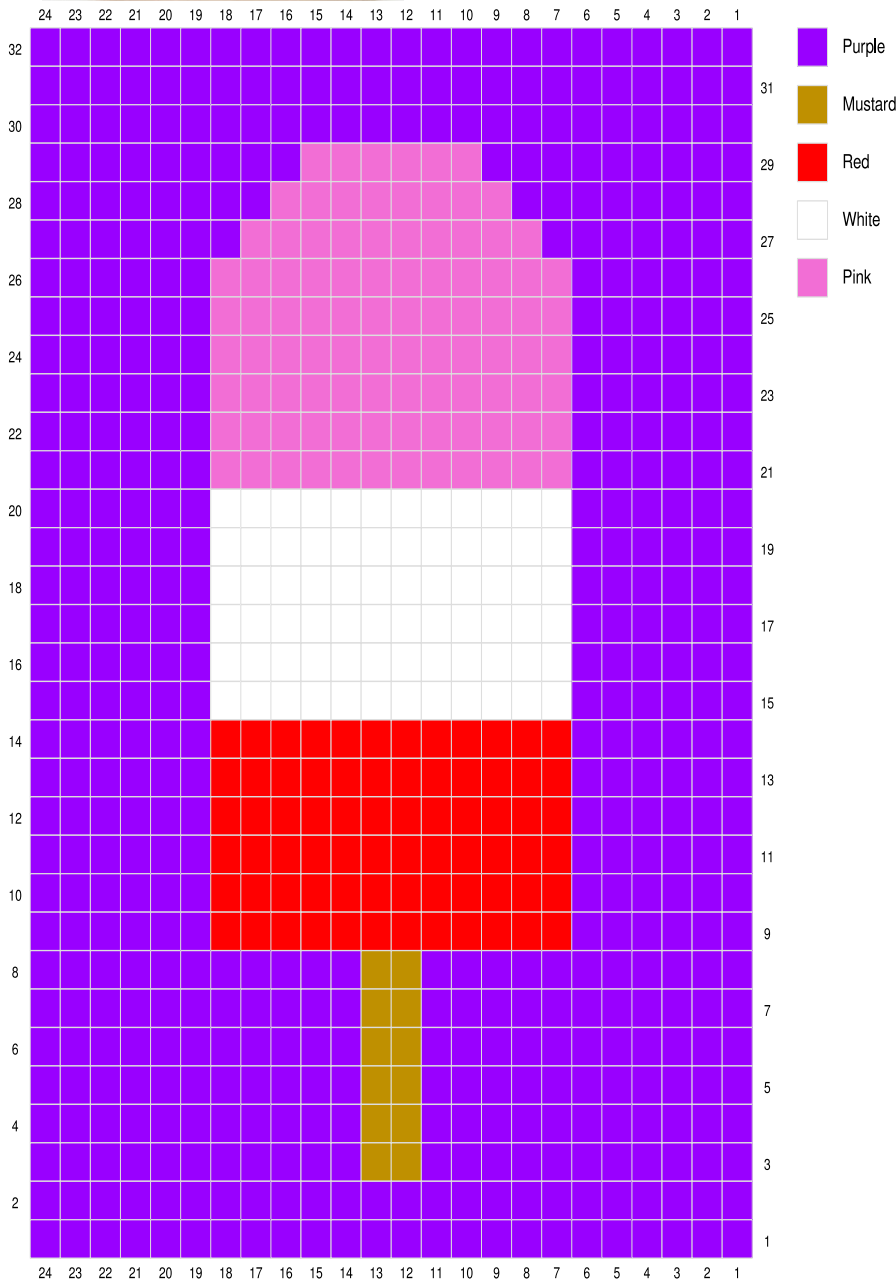
Repeat border as in Blue square using Purple, Yellow and Red.

← Row 1 [RS]:	33
→ Row 2 [WS]:	2 2 15 1 13
← Row 3 [RS]:	12 2 14 2 3
→ Row 4 [WS]:	20 1 12
← Row 5 [RS]:	3 4 2 6 1 3 2 3 3 6
→ Row 6 [WS]:	4 17 2 10
← Row 7 [RS]:	1 26 6
→ Row 8 [WS]:	9 19 1 1 3
← Row 9 [RS]:	7 13 3 10
→ Row 10 [WS]:	10 1 2 13 7
← Row 11 [RS]:	7 11 3 2 10
→ Row 12 [WS]:	10 3 3 10 7
← Row 13 [RS]:	7 9 3 5 9
→ Row 14 [WS]:	9 6 3 8 7
← Row 15 [RS]:	8 6 3 7 9
→ Row 16 [WS]:	8 9 3 4 9
← Row 17 [RS]:	10 1 4 10 8
→ Row 18 [WS]:	7 13 3 10
← Row 19 [RS]:	11 1 14 7
→ Row 20 [WS]:	6 12 15
← Row 21 [RS]:	17 11 5
→ Row 22 [WS]:	5 9 19
← Row 23 [RS]:	21 8 4
→ Row 24 [WS]:	4 6 23
← Row 25 [RS]:	25 5 3
→ Row 26 [WS]:	2 5 26
← Row 27 [RS]:	28 4 1
→ Row 28 [WS]:	1 3 29
← Row 29 [RS]:	30 3
→ Row 30 [WS]:	2 31
← Row 31 [RS]:	33
→ Row 32 [WS]:	33



Fab Lolly 1

Make 1. CH25 and starting in the 2nd CH from the hook start Row 1.



← Row 1 [RS]:	24
→ Row 2 [WS]:	24
← Row 3 [RS]:	11 2 11
→ Row 4 [WS]:	11 2 11
← Row 5 [RS]:	11 2 11
→ Row 6 [WS]:	11 2 11
← Row 7 [RS]:	11 2 11
→ Row 8 [WS]:	11 2 11
← Row 9 [RS]:	6 12 6
→ Row 10 [WS]:	6 12 6
← Row 11 [RS]:	6 12 6
→ Row 12 [WS]:	6 12 6
← Row 13 [RS]:	6 12 6
→ Row 14 [WS]:	6 12 6
← Row 15 [RS]:	6 12 6
→ Row 16 [WS]:	6 12 6
← Row 17 [RS]:	6 12 6
→ Row 18 [WS]:	6 12 6
← Row 19 [RS]:	6 12 6
→ Row 20 [WS]:	6 12 6
← Row 21 [RS]:	6 12 6
→ Row 22 [WS]:	6 12 6
← Row 23 [RS]:	6 12 6
→ Row 24 [WS]:	6 12 6
← Row 25 [RS]:	6 12 6
→ Row 26 [WS]:	6 12 6
← Row 27 [RS]:	7 10 7
→ Row 28 [WS]:	8 8 8
← Row 29 [RS]:	9 6 9
→ Row 30 [WS]:	24
← Row 31 [RS]:	24
→ Row 32 [WS]:	24

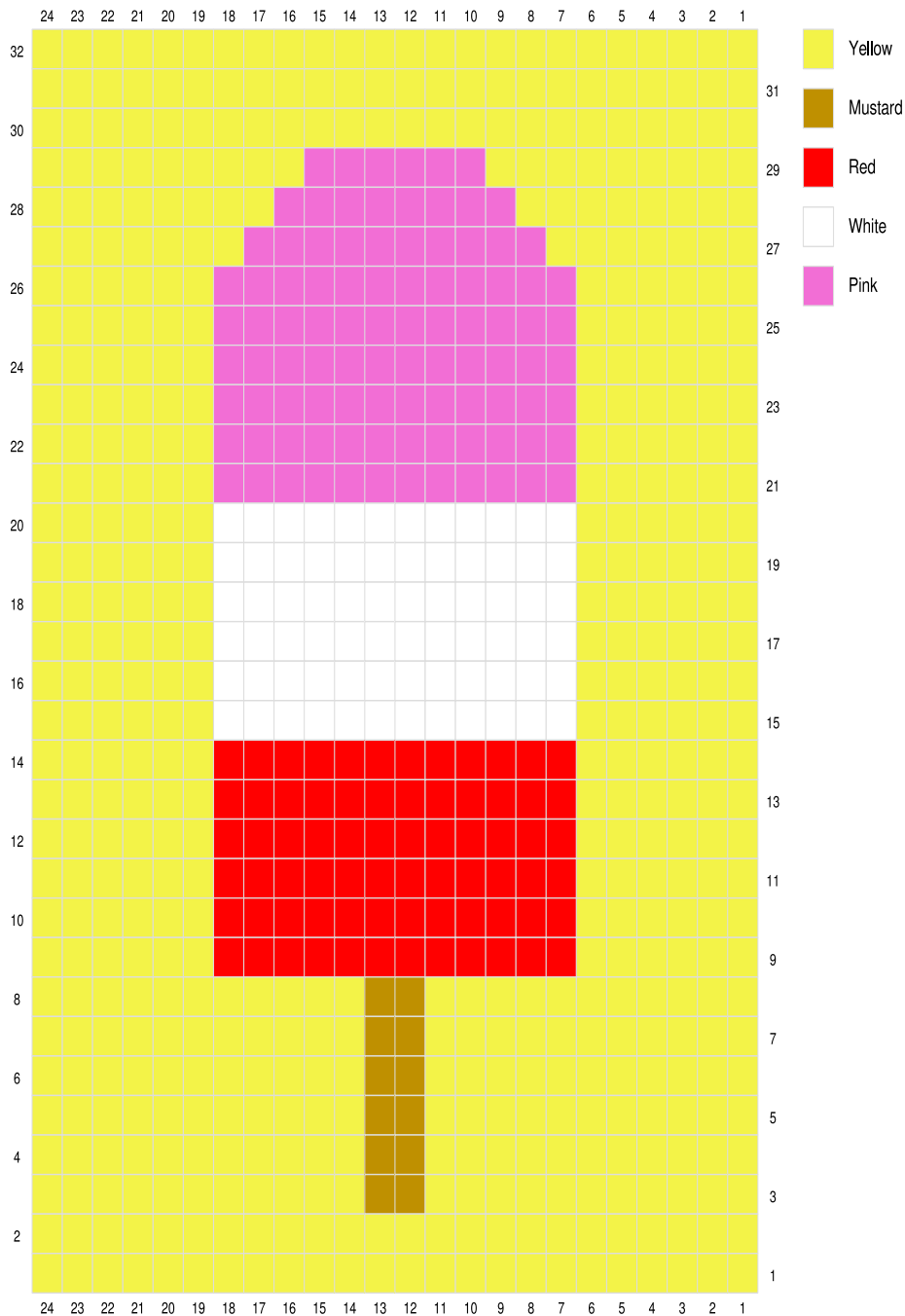
Repeat border as in blue ice cream square using Coral, Yellow and Bright Blue.





Fab Lolly 2

Make 1. CH25 and starting in the 2nd CH from the hook begin Row 1.



← Row 1 [RS]:	24
→ Row 2 [WS]:	24
← Row 3 [RS]:	11 2 11
→ Row 4 [WS]:	11 2 11
← Row 5 [RS]:	11 2 11
→ Row 6 [WS]:	11 2 11
← Row 7 [RS]:	11 2 11
→ Row 8 [WS]:	11 2 11
← Row 9 [RS]:	6 12 6
→ Row 10 [WS]:	6 12 6
← Row 11 [RS]:	6 12 6
→ Row 12 [WS]:	6 12 6
← Row 13 [RS]:	6 12 6
→ Row 14 [WS]:	6 12 6
← Row 15 [RS]:	6 12 6
→ Row 16 [WS]:	6 12 6
← Row 17 [RS]:	6 12 6
→ Row 18 [WS]:	6 12 6
← Row 19 [RS]:	6 12 6
→ Row 20 [WS]:	6 12 6
← Row 21 [RS]:	6 12 6
→ Row 22 [WS]:	6 12 6
← Row 23 [RS]:	6 12 6
→ Row 24 [WS]:	6 12 6
← Row 25 [RS]:	6 12 6
→ Row 26 [WS]:	6 12 6
← Row 27 [RS]:	7 10 7
→ Row 28 [WS]:	8 8 8
← Row 29 [RS]:	9 6 9
→ Row 30 [WS]:	24
← Row 31 [RS]:	24
→ Row 32 [WS]:	24

Repeat border as in blue ice cream square using Purple , Denim and Red.

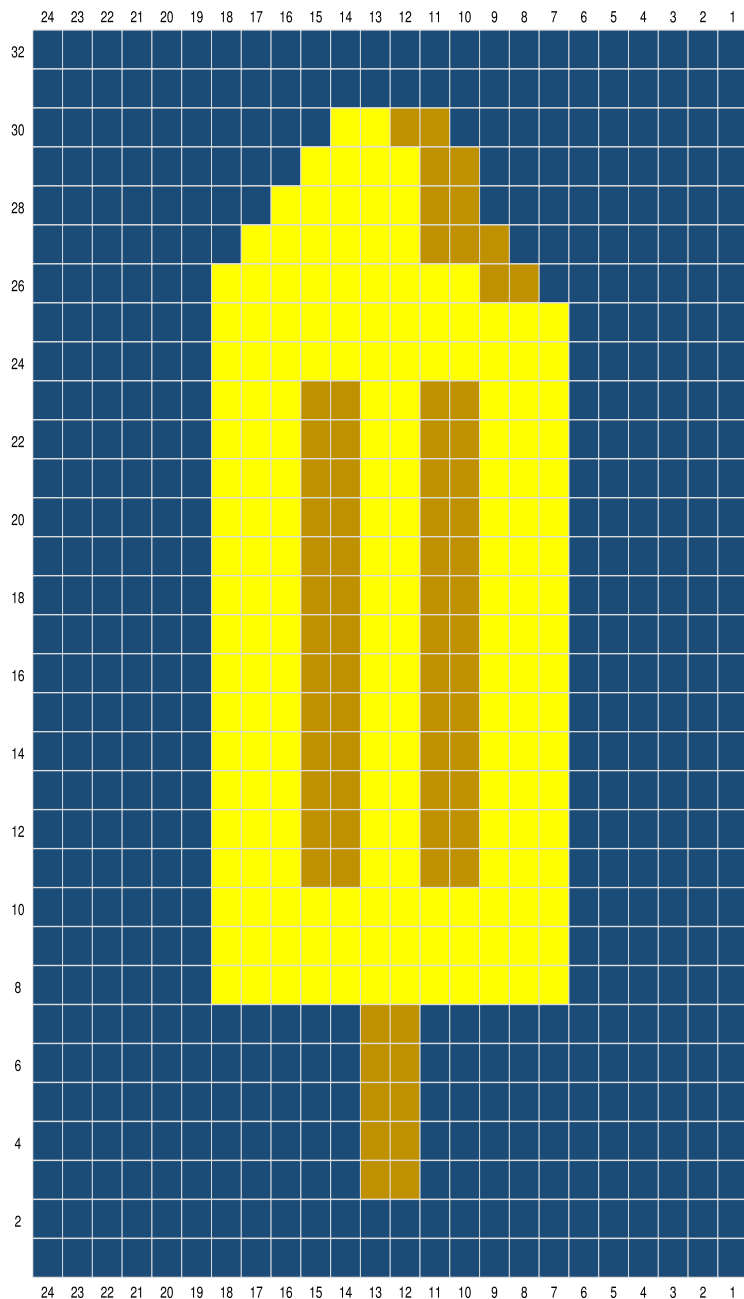
Cute Crochet Makes 2022



Lemonade Lolly 1



Make 1. CH25 and starting in the 2nd CH from the hook begin Row 1.



Denim
Mustard
Yellow

← Row 1 [RS]:	24
→ Row 2 [WS]:	24
← Row 3 [RS]:	11 2 11
→ Row 4 [WS]:	11 2 11
← Row 5 [RS]:	11 2 11
→ Row 6 [WS]:	11 2 11
← Row 7 [RS]:	11 2 11
→ Row 8 [WS]:	6 12 6
← Row 9 [RS]:	6 12 6
→ Row 10 [WS]:	6 12 6
← Row 11 [RS]:	6 3 2 2 2 3 6
→ Row 12 [WS]:	6 3 2 2 2 3 6
← Row 13 [RS]:	6 3 2 2 2 3 6
→ Row 14 [WS]:	6 3 2 2 2 3 6
← Row 15 [RS]:	6 3 2 2 2 3 6
→ Row 16 [WS]:	6 3 2 2 2 3 6
← Row 17 [RS]:	6 3 2 2 2 3 6
→ Row 18 [WS]:	6 3 2 2 2 3 6
← Row 19 [RS]:	6 3 2 2 2 3 6
→ Row 20 [WS]:	6 3 2 2 2 3 6
← Row 21 [RS]:	6 3 2 2 2 3 6
→ Row 22 [WS]:	6 3 2 2 2 3 6
← Row 23 [RS]:	6 3 2 2 2 3 6
→ Row 24 [WS]:	6 12 6
← Row 25 [RS]:	6 12 6
→ Row 26 [WS]:	6 9 2 7
← Row 27 [RS]:	8 3 6 7
→ Row 28 [WS]:	8 5 2 9
← Row 29 [RS]:	9 2 4 9
→ Row 30 [WS]:	10 2 2 10
← Row 31 [RS]:	24
→ Row 32 [WS]:	24

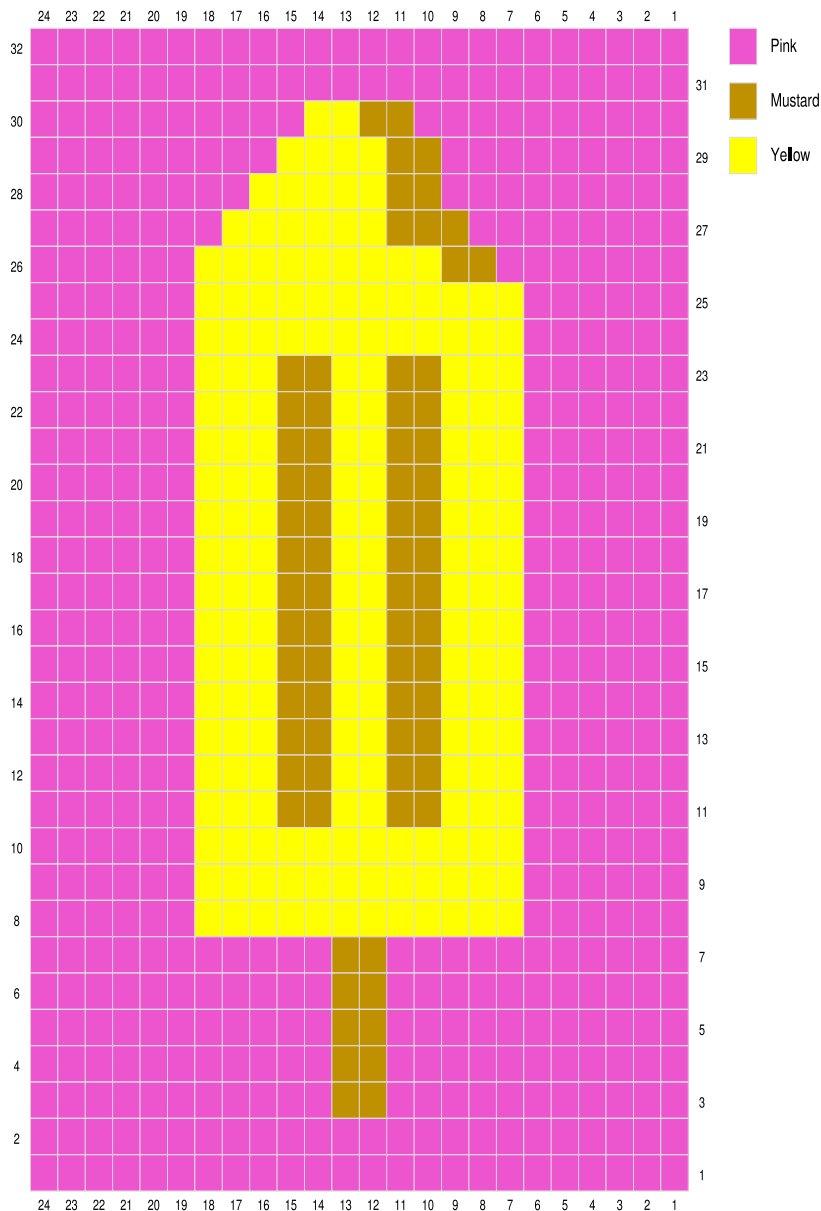
Repeat border as in blue ice cream square using Red, Purple and Pink.



Lemonade Lolly 2



Make 1. CH25 and starting in the 2nd CH from the hook begin Row 1.



← Row 1 [RS]:	24
→ Row 2 [WS]:	24
← Row 3 [RS]:	11 2 11
→ Row 4 [WS]:	11 2 11
← Row 5 [RS]:	11 2 11
→ Row 6 [WS]:	11 2 11
← Row 7 [RS]:	11 2 11
→ Row 8 [WS]:	6 12 6
← Row 9 [RS]:	6 12 6
→ Row 10 [WS]:	6 12 6
← Row 11 [RS]:	6 3 2 2 2 3 6
→ Row 12 [WS]:	6 3 2 2 2 3 6
← Row 13 [RS]:	6 3 2 2 2 3 6
→ Row 14 [WS]:	6 3 2 2 2 3 6
← Row 15 [RS]:	6 3 2 2 2 3 6
→ Row 16 [WS]:	6 3 2 2 2 3 6
← Row 17 [RS]:	6 3 2 2 2 3 6
→ Row 18 [WS]:	6 3 2 2 2 3 6
← Row 19 [RS]:	6 3 2 2 2 3 6
→ Row 20 [WS]:	6 3 2 2 2 3 6
← Row 21 [RS]:	6 3 2 2 2 3 6
→ Row 22 [WS]:	6 3 2 2 2 3 6
← Row 23 [RS]:	6 3 2 2 2 3 6
→ Row 24 [WS]:	6 12 6
← Row 25 [RS]:	6 12 6
→ Row 26 [WS]:	6 9 2 7
← Row 27 [RS]:	8 3 6 7
→ Row 28 [WS]:	8 5 2 9
← Row 29 [RS]:	9 2 4 9
→ Row 30 [WS]:	10 2 2 10
← Row 31 [RS]:	24
→ Row 32 [WS]:	24

Repeat border as in blue ice cream square using Coral, Bright Blue and Purple.

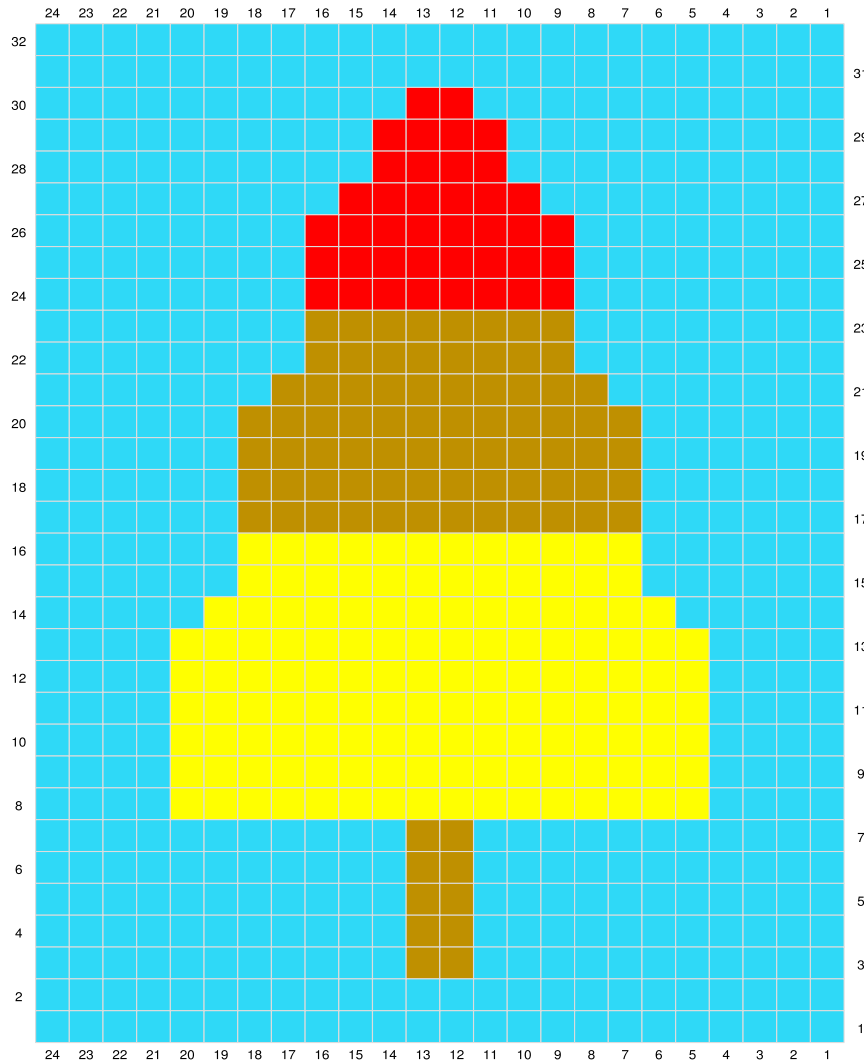
Cute Crochet Makes 2022



Rocket Lolly



Make 1. CH25. Starting in the 2nd CH from the hook begin Row 1.



■ Bright Blue
■ Mustard
■ Yellow
■ Red

← Row 1 [RS]:	24
→ Row 2 [WS]:	24
← Row 3 [RS]:	11 2 11
→ Row 4 [WS]:	11 2 11
← Row 5 [RS]:	11 2 11
→ Row 6 [WS]:	11 2 11
← Row 7 [RS]:	11 2 11
→ Row 8 [WS]:	4 16 4
← Row 9 [RS]:	4 16 4
→ Row 10 [WS]:	4 16 4
← Row 11 [RS]:	4 16 4
→ Row 12 [WS]:	4 16 4
← Row 13 [RS]:	4 16 4
→ Row 14 [WS]:	5 14 5
← Row 15 [RS]:	6 12 6
→ Row 16 [WS]:	6 12 6
← Row 17 [RS]:	6 12 6
→ Row 18 [WS]:	6 12 6
← Row 19 [RS]:	6 12 6
→ Row 20 [WS]:	6 12 6
← Row 21 [RS]:	7 10 7
→ Row 22 [WS]:	8 8 8
← Row 23 [RS]:	8 8 8
→ Row 24 [WS]:	8 8 8
← Row 25 [RS]:	8 8 8
→ Row 26 [WS]:	8 8 8
← Row 27 [RS]:	9 6 9
→ Row 28 [WS]:	10 4 10
← Row 29 [RS]:	10 4 10
→ Row 30 [WS]:	11 2 11
← Row 31 [RS]:	24
→ Row 32 [WS]:	24

Repeat border as in blue ice cream square using Denim, Red and Yellow.

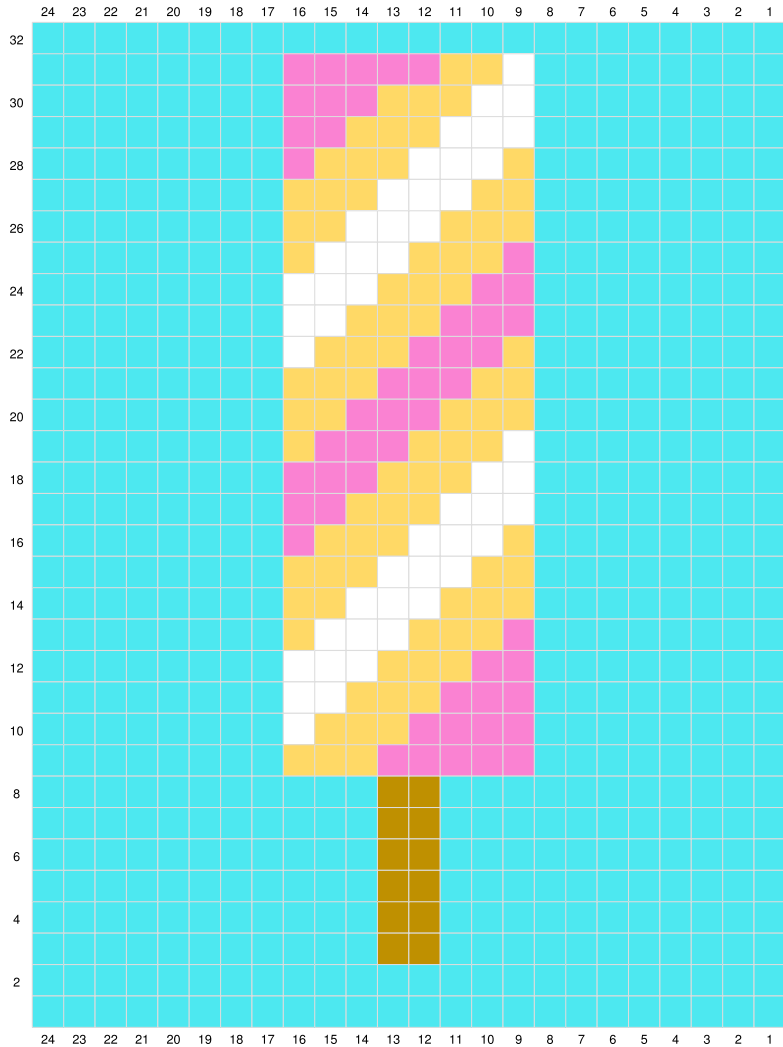
Cute Crochet Makes 2022



Striped Lolly



Make 1. CH25. Starting in the 2nd CH from the hook begin Row 1.



- Pink
- Bright Blue
- White
- Yellow
- Mustard

- ← Row 1 [RS]: 24
- Row 2 [WS]: 24
- ← Row 3 [RS]: 11 2 11
- Row 4 [WS]: 11 2 11
- ← Row 5 [RS]: 11 2 11
- Row 6 [WS]: 11 2 11
- ← Row 7 [RS]: 11 2 11
- Row 8 [WS]: 11 2 11
- ← Row 9 [RS]: 8 5 3 8
- Row 10 [WS]: 8 1 3 4 8
- ← Row 11 [RS]: 8 3 3 2 8
- Row 12 [WS]: 8 3 3 2 8
- ← Row 13 [RS]: 8 1 3 3 1 8
- Row 14 [WS]: 8 2 3 3 8
- ← Row 15 [RS]: 8 2 3 3 8
- Row 16 [WS]: 8 1 3 3 1 8
- ← Row 17 [RS]: 8 3 3 2 8
- Row 18 [WS]: 8 3 3 2 8
- ← Row 19 [RS]: 8 1 3 3 1 8
- Row 20 [WS]: 8 2 3 3 8
- ← Row 21 [RS]: 8 2 3 3 8
- Row 22 [WS]: 8 1 3 3 1 8
- ← Row 23 [RS]: 8 3 3 2 8
- Row 24 [WS]: 8 3 3 2 8
- ← Row 25 [RS]: 8 1 3 3 1 8
- Row 26 [WS]: 8 2 3 3 8
- ← Row 27 [RS]: 8 2 3 3 8
- Row 28 [WS]: 8 1 3 3 1 8
- ← Row 29 [RS]: 8 3 3 2 8
- Row 30 [WS]: 8 3 3 2 8
- ← Row 31 [RS]: 8 1 2 5 8
- Row 32 [WS]: 24

Repeat border as in blue ice cream square using Bright Blue, Red and Purple.

Cute Crochet Makes 2022



Beach Bag Join

1. Lay out squares as shown in photo. Starting with the 2 bottom ice cream squares join **DENIM** in the CH1 space of both squares. Join squares together by making a DC through the inside loops of each square – working through the back loop of the left square and the front loop of the right square. Join the 10 middle squares together using this method.



2. Join the lollipop squares to the front panel by joining **DENIM** in the CH1 space of both squares on the right-hand side. **Repeat Row 1.** Once you have joined the 8 squares together finishing in the CH1 space of the fab and twist lolly squares, turn bag over and fold in half - so the back and front panels line up. Continue joining the squares together across the back of the bag. SLST into the 1st DC made between the fab and rocket lolly squares to join. Fasten off yarn.



3. **Side Seams.** Join **DENIM** in the CH1 spaces at the top of the bag on the rocket and red ice cream squares. DC in **BOTH LOOPS** on **BOTH** squares. Join the 4 squares together making a DC in **BOTH LOOPS** and in the CH1 spaces on **BOTH** squares. Repeat this for the other 3 sides. Re join DENIM in the CH1 space between the bottom ice cream square and the lemon lolly and make (2DC). Join across the base by making DC in **BOTH LOOPS and CH1 spaces** of both squares. Work around the base of the bag making (2DC) in each corner CH1 space each side of the join – *see yellow arrows*. SLST in the 1st DC made to join. Fasten off yarn.





4. Join **DENIM** in any ST at the top of the bag. Make 1DC in each ST and CH1 space around. SLST in the 1st DC made to join.
5. – 6. (CH1, DC). Make 1DC in each ST around bag. SLST in the 1st DC made to join. Fasten off yarn. (3 rows in total of DENIM).
7. Join Bright Blue and make 1DC in each ST around. SLST in 1st DC made to join. Fasten off yarn.
8. Join Yellow and repeat Row 7.
9. Join Coral and repeat Row 7.

Straps – make 2

1. Using CORAL CH101. DC in 2nd CH from hook and across. Fasten off yarn. (100sts).
2. Join YELLOW on RS of work and make 1DC in each ST across. Fasten off yarn.
3. Join BRIGHT BLUE and repeat Row 2.
4. – 6. Join DENIM on RS of work repeat Row 2. (3 rows of DENIM).
7. Join BRIGHT BLUE and repeat Row 2.
8. Join YELLOW and repeat Row 2.
9. Join CORAL and repeat Row 2.
10. Pin straps in the inside of the bag so it lines up with the bottom of the top band and is in the top centre of the ice cream square. Sew into place.

