

## Keep Cosy Blanket

Hook size: 4mm

Yarn: Stylecraft Special DK- White, Fondant, Candyfloss, Apricot, Lemon, Spring Green, Sherbet, Clematis

**This pattern is written in US terms**

### US Terminology

SC – single crochet

DC – double crochet

ST – stitch

FPDC – front post double crochet

### UK Terminology

DC

TR

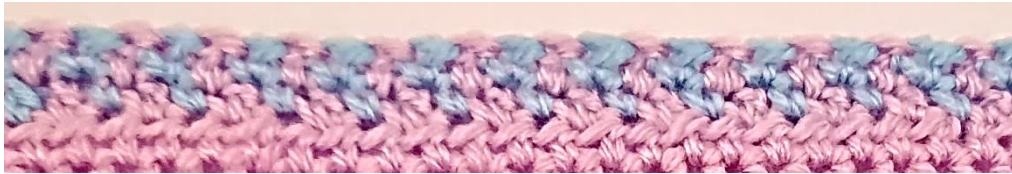
FPTR

**45. (RS). LEMON PEEL STITCH section - You will be changing colour in the last part of the ST before the colour change.**

Join **SHERBERT** in the 1<sup>st</sup> ST. (**CH1, SC**) – CH1 does not count as a ST throughout pattern. \* **CLEMATIS DC** in the next ST. **SHERBERT SC** in the following ST. Repeat from \* across finishing with a **SC** in the last ST.



**46. (WS). \* CLEMATIS DC in the 1<sup>st</sup> ST, followed by a SHERBERT SC in the next ST. Repeat from \* across finishing with a DC in the last ST. Fasten off CLEMATIS.**



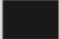

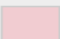
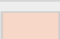
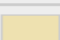
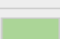
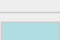
**47. (RS). Working in SHERBERT only for the next few rows - Repeat Row 45.**

**48. (WS). Repeat Row 46.**

**49. (RS) – Row 52 (WS). SC in each ST across.**



**53. (RS) BOBBLE ST CROCHET section.** Follow **ROW 53** of Chart. The numbers within the colour blocks indicate how many stitches to make in that colour. **Each ST is a SC apart** from the **BLACK** coloured squares which are a **WHITE BOBBLE ST**. Change colours in the last yarn over in the ST before the colour change. Carry bobble colour along back of work and fasten off at the end of each row. *Bobble are made on the wrong side of work.*

	White
	Fondant
	Candyfloss
	Apricot
	Lemon
	Spring Green
	Sherbet

**To make the Bobble Stitch – (5DC's together).** This ST will always be worked on the **WRONG SIDE** of your work. YO, insert hook, pull through, YO, and pull through 2 stitches. Repeat this 4 more times. You will end up with 6 loops on your hook, (Colour change yarn here). YO and pull through all of the loops on the hook.



← Row 53 [RS]: 157

→ Row 54 [WS]: 22 1 1 1 1 1 1 1 1 1 1 1 5 1 1 1 1 7 1 1 1 5 1 1 1 1 1 1 1 1  
 1 1 1 6 1 1 1 1 1 1 1 1 1 1 1 5 1 1 1 7 1 1 1 4 1 1 1 1 1  
 1 1 1 1 1 1 1 1 9 1 1 1 26

← Row 55 [RS]: 157

→ Row 56 [WS]: 21 1 1 1 1 1 1 1 1 1 1 1 1 1 4 1 1 1 6 1 1 1 5 1 1 1 1 1 1  
 1 1 1 1 1 1 1 4 1 1 1 1 1 1 1 1 1 1 1 1 1 4 1 1 1 7 1 1 1  
 4 1 1 1 1 1 1 1 1 1 1 1 1 1 9 1 1 1 26

← Row 57 [RS]: 157

→ Row 58 [WS]: 21 1 1 1 7 1 1 1 4 1 1 1 5 1 1 1 6 1 1 1 7 1 1 1 4 1 1 1 7  
 1 1 1 4 1 1 1 7 1 1 1 4 1 1 1 19 1 1 1 26

← Row 59 [RS]: 157

→ Row 60 [WS]: 21 1 1 1 7 1 1 1 4 1 1 1 4 1 1 1 7 1 1 1 7 1 1 1 4 1 1 1 7  
 1 1 1 4 1 1 1 7 1 1 1 4 1 1 1 19 1 1 1 26

← Row 61 [RS]: 157

→ Row 62 [WS]: 21 1 1 1 14 1 1 1 1 1 1 1 1 1 1 1 6 1 1 1 7 1 1 1 4 1 1 1 14  
 1 1 1 1 1 1 1 1 1 1 1 1 1 1 4 1 1 1 1 1 1 1 1 1 1 1 1 1 1  
 26

← Row 63 [RS]: 157

→ Row 64 [WS]: 21 1 1 1 14 1 1 1 1 1 1 1 1 1 1 1 1 4 1 1 1 7 1 1 1 4 1 1  
 1 14 1 1 1 1 1 1 1 1 1 1 1 1 4 1 1 1 1 1 1 1 1 1 1 1 1 1 1  
 1 1 26

← Row 65 [RS]: 157

→ Row 66 [WS]: 21 1 1 1 14 1 1 1 7 1 1 1 4 1 1 1 7 1 1 1 4 1 1 1 14 1 1 1 7  
 1 1 1 4 1 1 1 19 1 1 1 26

← Row 67 [RS]: 157

→ Row 68 [WS]: 21 1 1 1 7 1 1 1 4 1 1 1 7 1 1 1 4 1 1 1 7 1 1 1 4 1 1 1 7  
 1 1 1 4 1 1 1 7 1 1 1 4 1 1 1 19 1 1 1 26

← Row 69 [RS]: 157

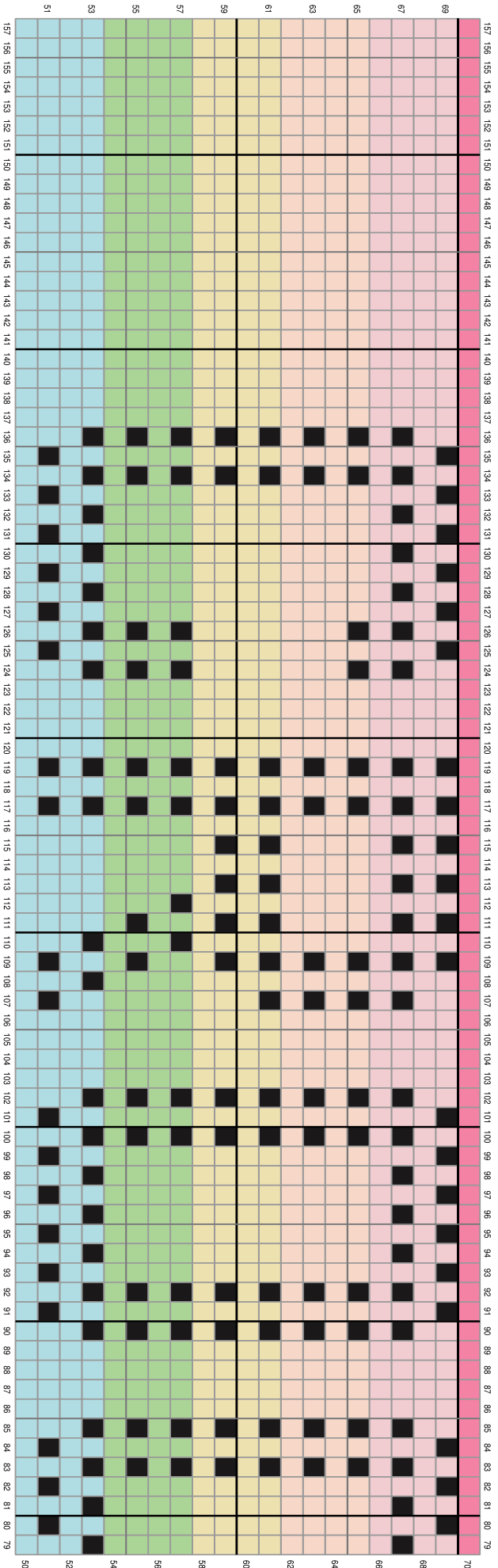
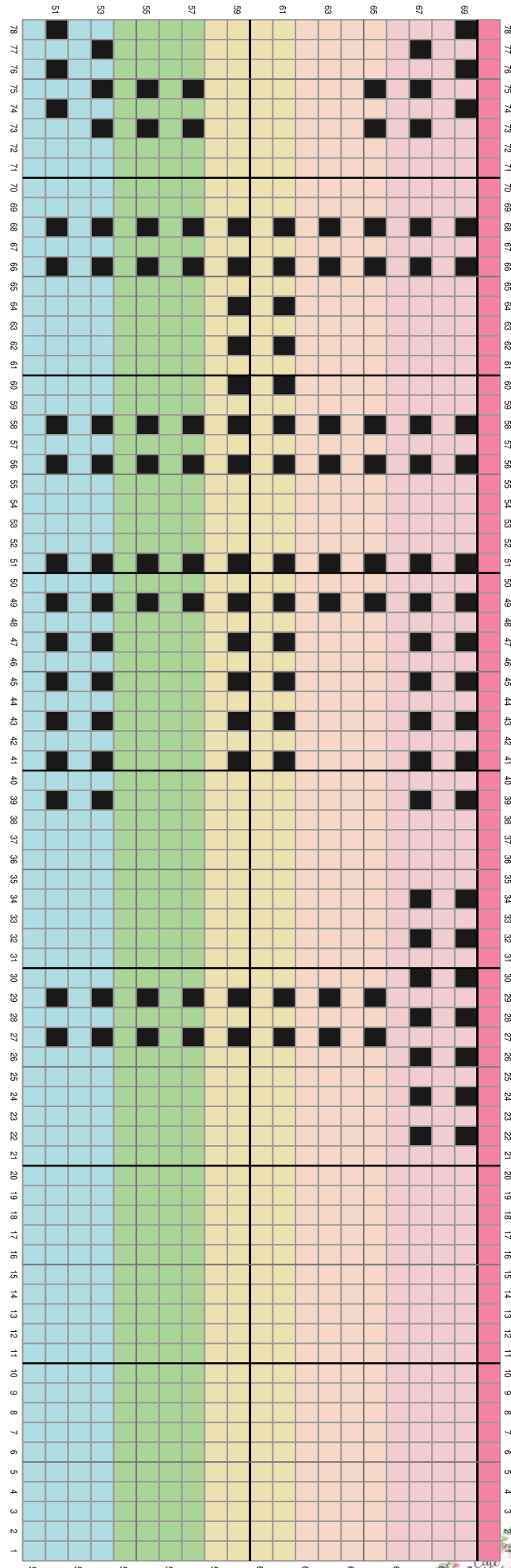
→ Row 70 [WS]: 21 1 1 1 1 1 1 1 1 1 1 1 1 1 4 1 1 1 1 1 1 1 1 1 1 1 4  
 1 1 1 1 1 1 1 1 1 1 1 1 1 4 1 1 1 1 1 1 1 1 1 1 1 1 4 1  
 1 1 7 1 1 1 4 1 1 1 1 1 1 1 1 1 1 1 4 1 1 1 1 1 1 1 1  
 1 1 1 1 1 21

← Row 71 [RS]: 157

→ Row 72 [WS]: 22 1 1 1 1 1 1 1 1 1 1 1 5 1 1 1 1 1 1 1 1 1 1 1 7 1 1 1 1  
 1 1 1 1 1 1 1 6 1 1 1 1 1 1 1 1 1 1 1 1 5 1 1 1 7 1 1 1 4 1  
 1 1 1 1 1 1 1 1 1 1 1 1 4 1 1 1 1 1 1 1 1 1 1 1 1 1 21

← Row 73 [RS]: 157





74. (WS). Continue in **FONDANT**. SC in each ST across.
75. (RS). SC in each ST across.
76. (WS). SC in each ST across.



77. (RS). **LEMON PEEL STITCH section** - CH3 – counts as 1<sup>st</sup> DC. \* SC in next ST. DC in the following ST. Repeat from \* across, finishing with a DC in the last ST.
78. (WS). (CH1, \* SC). DC in the next ST. SC in the following ST. Repeat from \* across, finishing with a SC in the top of the CH3.
79. (RS). **CH3** – Change to **CANDYFLOSS** in the last CH, \* SC in the next ST. Change to **FONDANT** in the last part of the SC and **DC** in the next ST. Repeat from \* across alternating colours. Finish with a **DC** in the last ST. – Change to **CANDYFLOSS** in the last part of the last ST.
80. (WS). (CH1, SC). \* **DC** in the next ST, **SC** in the following ST. Repeat from \* across finishing with a **SC** in the top of the CH3. Fasten off **FONDANT**
81. (RS). CH3- counts as DC throughout the following rows. DC in each ST across.
82. (WS). DC in each ST across making the last DC in the top of the CH3.



83. (RS). **WAFFLE STITCH section**. (CH1, FPDC), \* DC in the next 2sts. FPDC. Repeat from \* across finishing with a FPDC around the CH3.
84. (WS). CH3, \* FPDC in the next 2sts. DC in the following ST. Repeat from \* across finishing with a DC in the top of the CH3.
85. (RS). Rep **ROW 83**.
86. (WS). Rep **ROW 84**.
87. (RS). Rep **ROW 83**.
88. (WS). Rep **ROW 84**.
89. (RS). Rep **ROW 83**.
90. (WS). CH3, DC in the **FRONT LOOPS** of each ST across finishing with a DC in the top of the CH3. .
91. (RS). CH3, DC in the **BACK LOOPS** of each ST across finishing with a DC in the top of the CH3. Fasten off **CANDYFLOSS**.



Weave in ends. **Part 2 complete.**

