

Rainbow Bow

Hook size-4mm

Yarn: Stylecraft Special DK in Candyfloss, Apricot, Lemon, Spring Green, Sherbet, Clematis, White & Wisteria.

This pattern is written in US terms

US Terminology

SC – single crochet

DC – double crochet

SLST – slip stitch

CH – chain

ST - stitch

() – indicates all stitches to be made in one stitch.

[] – brackets indicate pattern repeat

UK Terms

DC

TR



Hooked by Robin's YouTube tutorial of my pattern

<https://www.youtube.com/watch?v=saUNxsi6n6c>

BOBBLE STITCH - B – 6DC together - This stitch will always be worked on the **WRONG SIDE** of your work. YO, pull through, YO and pull through 2sts. Repeat this 5 more times in the same stitch. You will end up with 7 loops on your hook. YO and pull through all of the loops on the hook.

1. Using **WHITE** CH24. SC in 2nd chain from hook and in each ST across. Fasten off yarn – alternatively you can carry the **WHITE** yarn up the side of work. (Each row throughout pattern will have 23sts).
2. Join **CANDYFLOSS** on the **WRONG** side of work. *CH1 at the start of each of the following rows. CH1 does not count as a ST throughout the pattern.* SC6. **B**, 9SC. **B**, SC6.
3. **TURN** and SC in each ST across. Fasten off yarn. **Repeat this row for all odd numbered rows up to ROW 23.**
4. Join **WHITE** SC6. **B**, SC9. **B**, SC6.
6. Join **APRICOT** SC7. [**B**, SC7] **twice**.
8. Join **WHITE** SC8. **B**, SC5. **B**, SC8.
10. Join **LEMON** SC9. **B**, SC3. **B**, SC9.
12. Join **WHITE** SC5. **B**, SC1. **B**, SC2. **B**, SC1. **B**, SC2. **B**, SC1. **B**, SC5.
14. Join **SPRING GREEN** SC3. **B**, SC4. [**B**, SC2] **twice**. **B**, SC4. **B**, SC3.
16. Join **WHITE** SC2. **B**, SC7. **B**, SC1. **B**, SC7. **B**, SC2.
18. Join **SHERBET** SC2. **B**, SC7. **B**, SC1. **B**, SC7. **B**, SC2.
20. Join **WHITE** SC3. **B**, SC5. **B**, SC3. **B**, SC5. **B**, SC3.
22. Join **CLEMATIS** SC5. **B**, SC1. **B**, SC7. **B**, SC1. **B**, SC5.
23. **TURN** and SC in each ST across. Fasten off yarn

Border

CH1 at the start of each of the following rows. CH1 does not count as a ST.

1. Join **WHITE** yarn in any corner ST (*Right side*). (SC, CH2, SC). SC in each ST around with (SC, CH2, SC) in the last corner ST. SLST in 1st SC to join. Fasten off yarn. (Each side has 23SC with CH2 in each corner).
2. Join **CANDYFLOSS** in any CH2 corner space. (SC, CH1, SC). SC in each ST around with (SC, CH1, SC) in corner spaces. SLST in 1st SC to join. (Each side has 25SC with CH1 in each corner).
3. SC in each ST around with (SC, CH1, SC) in corner spaces. SLST in 1st SC to join. Fasten off yarn. (Each side has 27SC with CH1 in each corner).

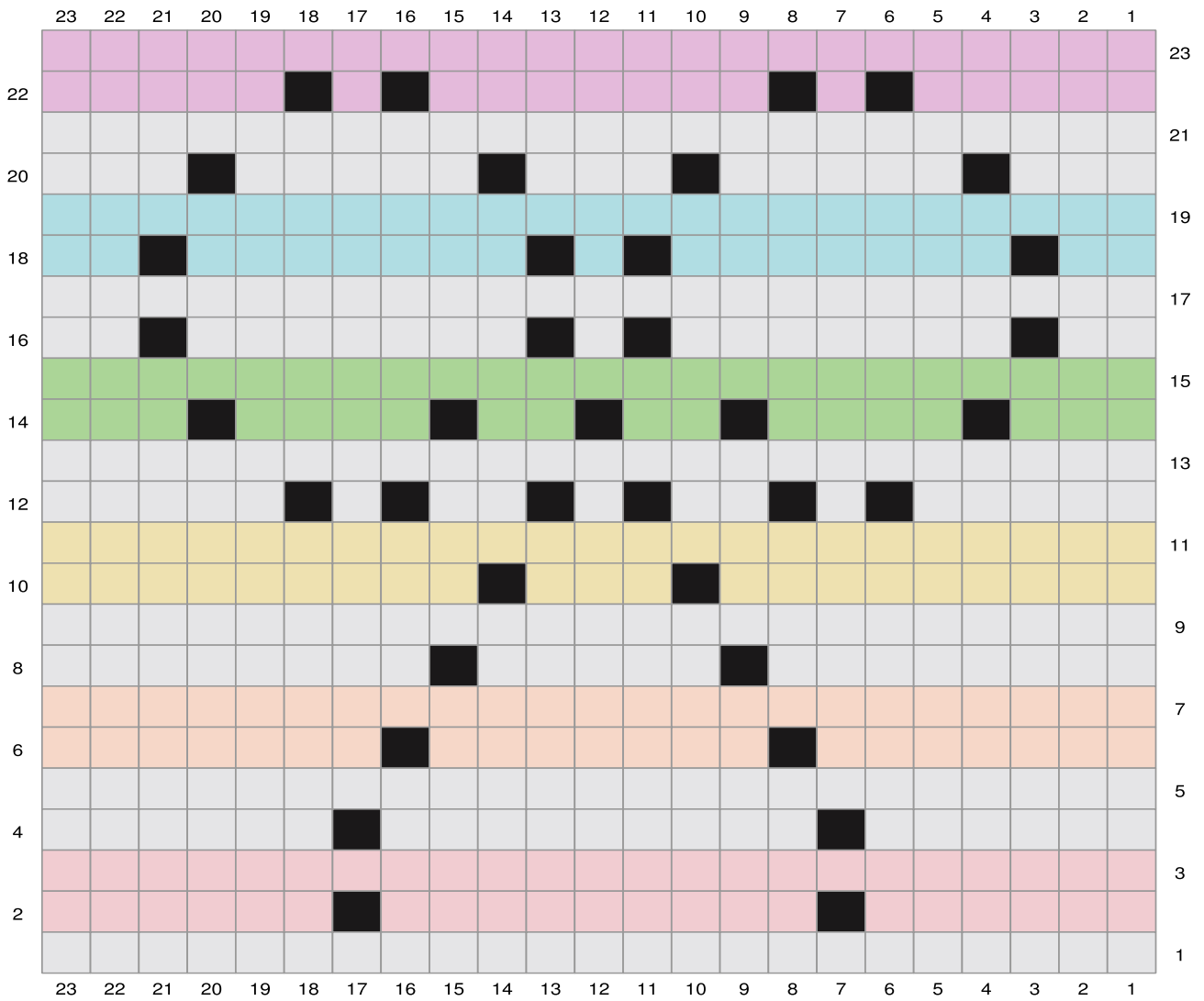
This pattern is property of Cute Crochet Makes and may not be copied, resold, shared or made tutorials of. You may sell items made using this pattern, but please credit Cute Crochet Makes as the designer.






Cute Crochet Makes



Unicorn Dreams Blanket... Rainbow Bow Square

Each block on the chart represents a SC stitch apart from the black squares which represent the bobble stitch.



-  White
-  Candyfloss
-  Apricot
-  Lemon
-  Sherbet
-  Spring Green
-  Clematis
-  Black Squares Represents BOBBLE stitches

