



AUTUMN DREAMS COWL

CROCHET PATTERN

US CROCHET TERMS

This pattern is the property of CuteCrochetMakes and may not be shared, copied or made tutorials of. You may sell items made from this pattern but please credit CuteCrochetMakes as the designer.

www.cutecrochetmakes.com

www.instagram.com/cutecrochetmakes



YARN

Hobbii Friends Extra Fine Merino.

1 skein used of each colour with 2 skeins of Light Gray used.

HOOK

4mm

ABBREVIATIONS

LG = Light Gray

AB = Arctic Blue

DD = Dark Denim

TB = Turkish Blue

MG = Misty Green – light green

S = Sage = mid green

BG = Bottle Green - dark green

C = Cognac - darker orange

B = Buckthorn – light orange

T = Tomato – red

CR = Cream

STITCHES

SC = Single Crochet

FP HDC = Front Post Half Double Crochet

FPDC = Front Post Double Crochet

HDC = Half Double Crochet

SLST = Slip Stitch

Bobble ST = 6DC together. This ST will always be worked on the **WRONG SIDE** of your work.

Yarn over (YO), insert hook into ST, pull up a loop. YO, and pull through 2 loops. (2 loops on hook). Repeat 5 more times in the same ST. (7 loops on hook). YO and pull through all 7 loops.

All stitches are SC unless otherwise stated.

CH1 and turn at the start of each row. CH1 does not count as a ST throughout pattern.

1. **(RS).** With DD CH 38. SC in the 2nd CH from the hook and in each CH across. *37sts here and throughout pattern.*
2. **(WS).** 37DD.
3. **(RS).** [1LG, 3DD] **9 times.** 1LG.
4. **(WS).** 2LG. [1DD, 3LG] **8 times.** 1DB, 2G – change to Arctic Blue in the last YO of the last ST. Fasten off Dark Blue.
5. **(RS).** [1AB, 3LG] **9 times.** 1AB.
6. **(WS).** 2AB. [1LG, 3AB] **8 times.** 1LG, 2AB. Fasten off Light Gray.
7. **(RS).** – **15. (RS).** SC in each ST across. Change to Light Gray in last YO of last ST of Row 15. Fasten off Arctic Blue.
16. **(WS).** – **21. (RS).** 37LG.
22. **(WS).** *Pumpkin bobble row – all Buckthorn sts are Bobble sts.* 2LG, [B, 3LG] **8 times.** B, 2LG. Fasten off Buckthorn. *9 bobbles made.*
23. **(RS).** LG in each ST across working in the **back loop** of each bobble ST.
24. **(WS).** 37LG.
25. **(RS).** *Pumpkin stalk row.* S = Sage long SC into row 23, the row above the bobble ST. 2LG, [S, 3LG] **8 times.** S, 2LG. Fasten off Sage.
26. **(WS).** – **32. (WS).** 37LG.



33. **(RS).** [6LG, 4MG] **3 times.** 6LG, 1MG.
34. **(WS).** 2MG, [4LG, 6MG] **3 times.** 4LG, 1MG.
35. **(RS).** 2MG, 2LG, [2MG, 4AB, 2MG, 2LG] **3 times.** 2MG, 1AB. Fasten off Light Gray.
36. **(WS).** *Mushroom Stalk row. Make 3 small bobbins of Cream. Do not carry the cream yarn across, leave on bobbin ready to pick up on the returning row.* 2AB, [4MG, 2AB, 2CR, 2AB] **3 times.** 4MG, 1AB.
37. **(RS).** 2AB, [2S, 3AB, 2CRFP HDC around the Cream ST from the row below, 3AB] **3 times.** 2MG, 3AB. Fasten off Cream & Misty Green.
38. **(WS).** *Red mushroom tops row. Make 3 small bobbins of Tomato. Do not carry the tomato yarn across, leave on bobbin ready to pick up on the returning row.* 7AB, [4T, 6AB] **3 times.**
39. **(RS).** [6AB, skip a ST, (1T, 1THDC), (1THDC, 1T), skip a ST] **3 times.** 7AB.
40. **(WS).** [8AB, 2T] **3 times.** 7AB. Fasten off Tomato.
41. **(RS).** – 44. **(WS).** 37AB.
- 42.
45. **(RS).** [1AB, 1S] **18 times.** 1AB- change to Sage in last YO of last ST. Fasten off Arctic Blue.
46. **(WS)** – 48. **(WS).** 37S.
49. **(RS).** *Acorns.* 4S. [1CR, 6S] **4 times.** 1CR, 4S.
50. **(WS).** 3S, 3CR. [4S, 3CR] **4 times.** 3S.
51. **(RS).** 3S. [1CRFP HDC around the ST the row below, 1CRFPDC around the Cream ST 2 rows below, 1CRFPDC around the Cream ST from the row below, 4S] **4 times.** 1CRFP HDC, 1CRFPDC, 1CRFPDC, 3S. Fasten off Cream yarn.
52. **(WS).** [2S, 5C] **5 times.** 2S.
53. **(RS).** 3S. [3C, 4S] **4 times.** 3C, 3S.
54. **(WS).** 4S. [1CFPHDC, 6S] **4 times.** 1CFPHDC, 4S. Fasten off Cognac.
55. **(RS).** – 58. **(WS).** 37S.
59. **(RS).** [1S, 1BG] **18 times.** 1S. Fasten off Bottle Green.
60. **(WS).** 37S. Change to Light Gray in last YO of last ST. Fasten off Sage.
61. **(RS).** 37LG.
62. **(WS).** Make small balls of each leaf colour and place on bobbins. Do not carry leaf colour across. Leave on bobbin ready to pick up on the returning row. 15LG, 2B, 20LG.
63. **(RS).** 2LG, 4T, 14LG, 2B, 1LG, 1B, 13LG.
64. **(WS).** 11LG, 1B, 1LG, 2B, 18LG, 2T, 2LG.
65. **(RS).** 2LG, 1T, 1LG, 3T, 14LG, 3B, 1LG, 1B, 5LG, 4C, 2LG.
66. **(WS).** 2LG, 2C, 7LG, 2B, 18LG, 2T, 1LG, 1T, 2LG.
67. **(RS).** 4LG, 1T, 1LG, 2T, 7G, 2C, 15G, 4B, 4LG, 3C, 1LG, 1C, 2LG. Fasten off Buckthorn.
68. **(WS).** 2LG, 1C, 1LG, 2C, 14LG, 2C, 1LG, 1C, 5LG, 2T, 6LG. Fasten off Tomato.
69. **(RS).** 11LG, 1C, 1LG, 2C, 14LG, 2C, 1LG, 1C, 4LG.
70. **(WS).** 6LG, 2C, 13LG, 3C, 1LG, 1C, 11LG.



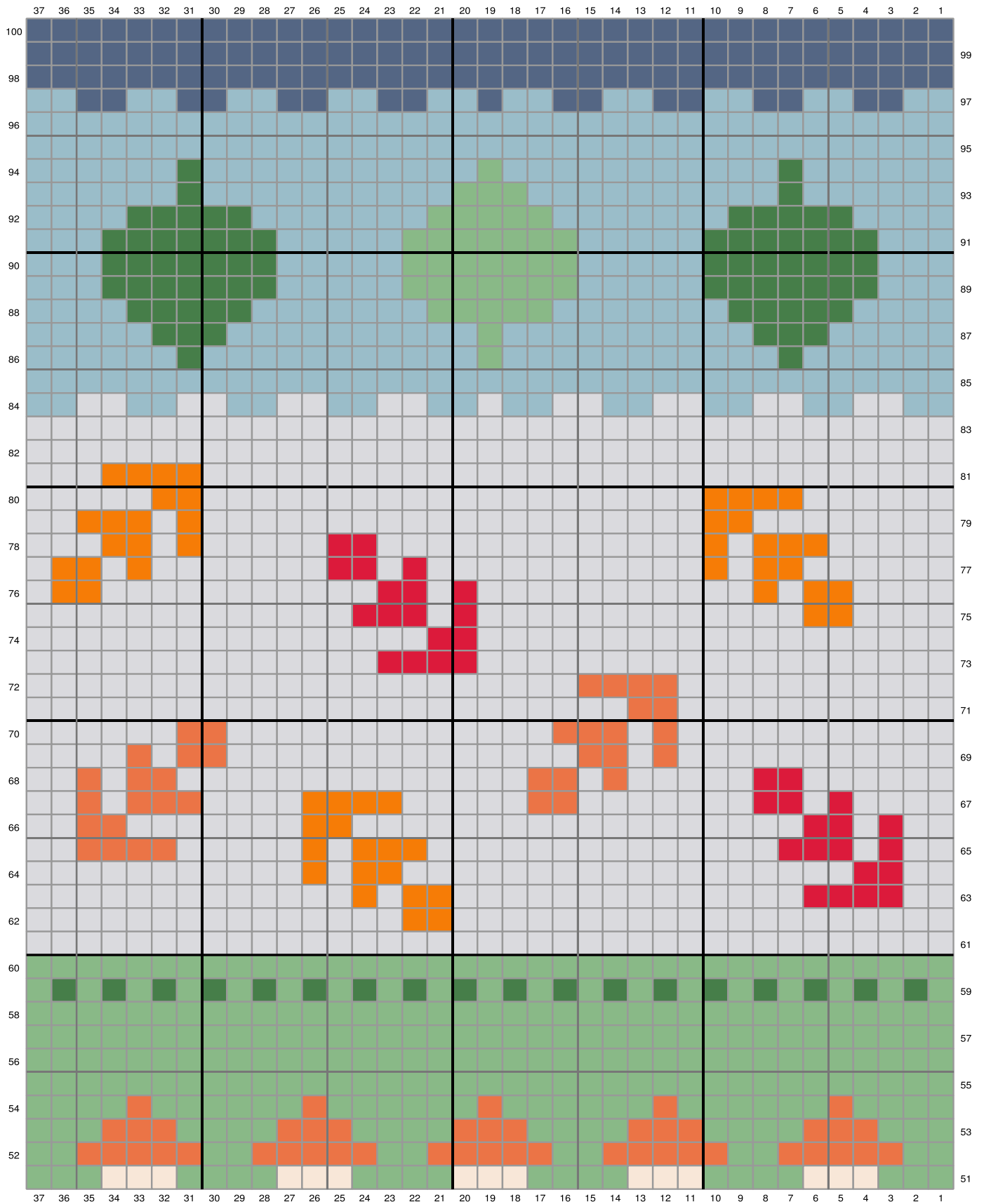
71. **(RS)**. 11LG, 2BC, 24LG.
72. **(WS)**. 22LG, 4C, 11LG.
73. **(RS)**. 19LG, 4T, 14LG.
74. **(WS)**. 16LG, 2T, 19LG.
75. **(RS)**. 4LG, 2B, 13LG, 1T, 1LG, 3T, 13LG.
76. **(WS)**. 1LG, 2B, 11LG, 2T, 1LG, 1T, 11LG, 1B, 1LG, 2B, 4LG.
77. **(RS)**. 6LG, 2B, 1LG, 1B, 11LG, 1T, 1LG, 2T, 7LG, 1B, 1LG, 2B, 1LG.
78. **(WS)**. 3LG, 2B, 1LG, 1B, 5LG, 2T, 13LG, 1B, 1LG, 3B, 5LG.
79. **(RS)**. 8LG, 2B, 20LG, 1B, 1LG, 3B, 2LG.
80. **(WS)**. 5LG, 2B, 20LG, 4B, 6LG.
81. **(RS)**. 30LG, 4B, 3LG.
82. **(WS)**. - 83. **(RS)**. 37LG– change to TB in last YO of the last ST.
84. **(WS)**. [2TB, 2LG] **4 times**. 2TB, 1LG. [2TB, 2LG] **4 times**. 2TB. Fasten off Light Gray.
85. **(RS)**. 37TB.
86. **(WS)**. Make small balls of the leaf colours on bobbins before starting. Do not carry leaf colour across, leave of bobbin to pick up on the returning row. 6TB, 1BG, 11TB, 1MG, 11TB, 1BG, 6TB.
87. **(RS)**. 5TB, 3BG, 10TB, 1MG, 10TB, 3BG, 5TB.
88. **(WS)**. 4TB, 5BG, 7TB, 5MG, 7TB, 5BG, 4TB.
89. **(RS)**. - 91. **(RS)**. 3TB, 7BG, 5TB, 7MG, 5TB, 7BG, 3TB.
92. **(WS)**. 4TB, 5BG, 7TB, 5MG, 7TB, 5BG, 4TB.
93. **(RS)**. 6TB, 1BG, 10TB, 3MG, 10TB, 1BG, 6TB.
94. **(WS)**. 6TB, 1BG, 11TB, 1MG, 11TB, 1BG, 6TB. Fasten off leaf colours.
95. **(RS)**. - 96. **(WS)**. 37TB.
97. **(RS)**. [2TB, 2DD] **4 times**. 2TB, 1DD. [2TB, 2DD] **4 times**. 2TB. Change to Dark Denim in last YO of last ST. Fasten off Turkish Blue. For a neck cowl fasten off here and follow border.
98. **(WS)**. - 100. **(WS)**. 37DD. Change to Light Gray in last YO of the last ST of Row 100.

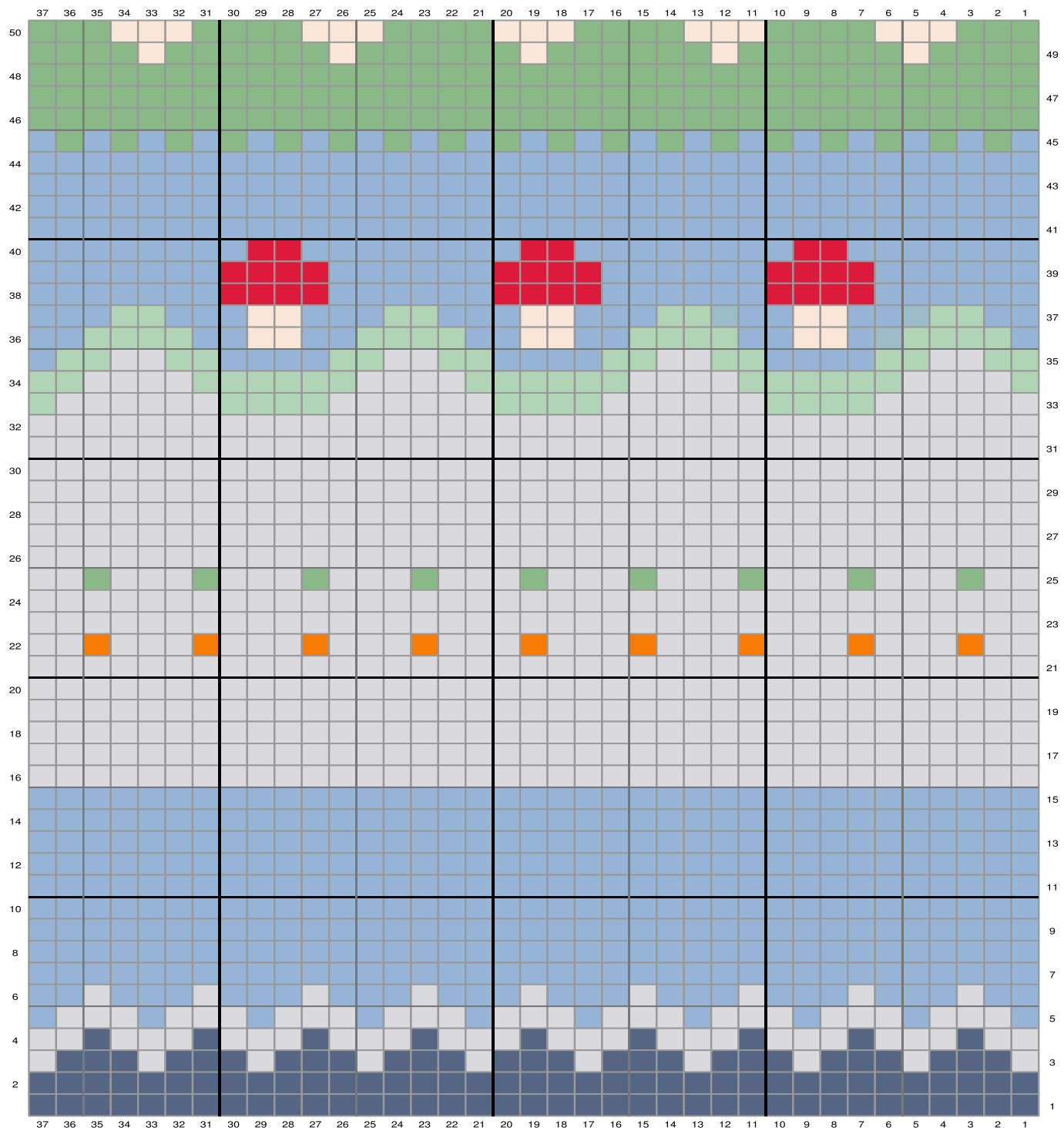
Repeat from Row 3 to 100 5 more Times. On the last repeat only follow pattern to row 97. Fasten off yarn leaving a long tail. Use the long tail to sew the ends together.

BORDER

1. Join Turkish Blue in the 1st ST. Working across the row ends make 1SC in each ST across. SLST in the 1st SC made to join.
2. CH1 – *does not count as a ST*. Make 1SC in the **back loops** of each ST across. SLST in the 1st SC made to join. Fasten off yarn.
3. Join Dark Denim in the 1st ST. CH3 – *counts as HDC and CH1*. * Skip a ST. HDC in the next ST. Repeat from * across. Skip the last ST and SLST in the 2nd CH of the beginning CH3 to join. Fasten off yarn.
4. Repeat border rows 1 – 3 on the underside of the cowl.
5. Using a long strand of Bottle green make lines for the leave veins as in photo on the misty green centre leaf. Block cowl if need.







- Hobbii Friends Extra Fine Merino 04 - Cream
- Hobbii Friends Extra Fine Merino 117 - Light Gray
- Hobbii Friends Extra Fine Merino 40 - Tomato
- Hobbii Friends Extra Fine Merino 29 - Buckthorn
- Hobbii Friends Extra Fine Merino 17 - Cognac
- Hobbii Friends Extra Fine Merino 113 - Misty Green
- Hobbii Friends Extra Fine Merino 114 - Sage
- Hobbii Friends Extra Fine Merino 112 - Bottle Green
- Hobbii Friends Extra Fine Merino 77 - Arctic Blue
- Hobbii Friends Extra Fine Merino 88 - Turkish Blue
- Hobbii Friends Extra Fine Merino 81 - Dark Denim

